

MAGAIN



13 St Marys Street ST MARYS SA

3  1  1 

INSPECTION BY APPOINTMENT

Situated on one of the larger blocks in the area, this nicely established property has an unusually wide frontage of over 25m, a lovely big backyard and plenty of potential for the family seeking an original property to renovate, refurbish or redevelop.

Comprising good size lounge, high ceilings, timber floors beneath existing floor coverings, original kitchen & bathroom, three good size bedrooms, separate dine, big living room, a studio, lockup garage, good size worksheds and lovely fruit trees.

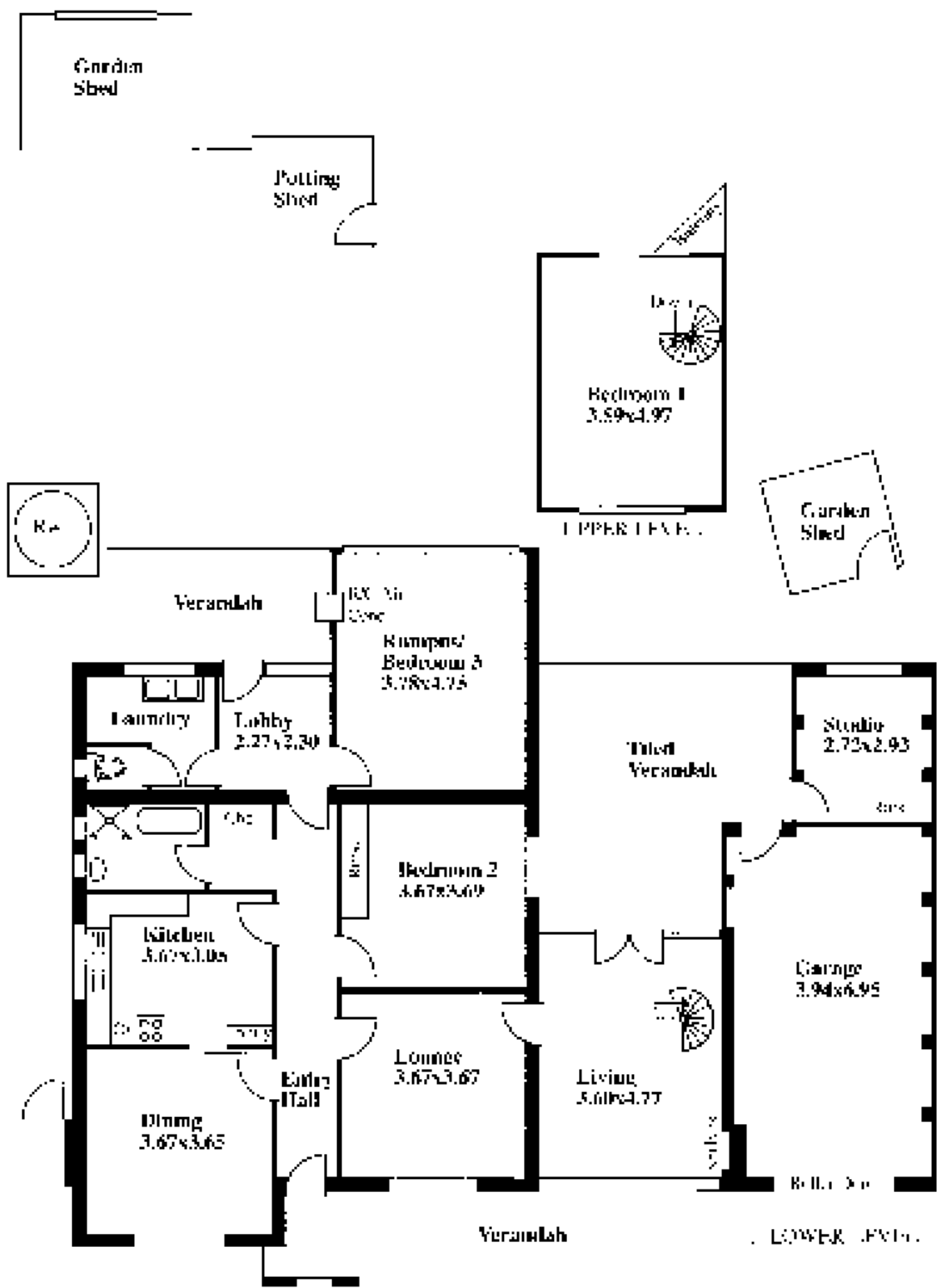
Close to Panorama TAFE and adjacent Colonel Light

[For full version visit the website](https://www.magain.com.au/property/13-st-marys-street-st-marys-sa/8421842)

Type : House
Land Size : 924 sqm
View : <https://www.magain.com.au/property/13-st-marys-street-st-marys-sa/8421842>

<https://www.magain.com.au>
Magain Real Estate

765 Marion Road Ascot Park SA
08 8277 1777



Garden Shed

Potting Shed

Bedroom 1
3.59 x 4.97

Garden Shed

UPPER LEVEL

Verandah

Laundry

Lobby
2.27 x 2.30

Bedroom 3
3.78 x 4.75

Tiled Verandah

Studio
2.73 x 2.93

Bedroom 2
3.67 x 3.69

Kitchen
3.67 x 4.05

Garage
3.94 x 6.95

Lounge
3.67 x 3.67

Living
3.67 x 4.77

Dining
3.67 x 3.65

Entrance Hall

Bedroom

Verandah

LOWER LEVEL