

# MAGAIN



## 3-253 Esplanade SEACLIFF SA

3 2 2

This is your chance to secure a piece of prime real estate. Located in the highly sought after suburb of Seacliff right next to the surf lifesaving club in a private and safe cul-de-sac.

The modern home consists of three double bedrooms, master bedroom with peaked ceiling giving it that extra charm and character, ensuite and built in robes. Open plan living area overlooking the stunning views along the coastline.

Whether you're looking for that beachside dream home or you're an investor looking for a holiday rental, this Esplanade address is a rare find and is not to be missed!

**Type** : House  
**Building Size** : 22 sqm  
**Land Size** : 190 sqm  
**View** : <https://www.magain.com.au/property/32-53-esplanade-seacliff-sa/8421873>

[For full version visit the website](https://www.magain.com.au)

<https://www.magain.com.au>  
Magain Real Estate

765 Marion Road Ascot Park SA  
08 8277 1777

# Apartment 3 253 Esplanade, Seacliff

This drawing is for illustration purposes only.  
(DRAWING IS NOT TO SCALE)

The drawing and the information contained is not intended to be part of any contract. All measurements are approximate and details intended to be relied upon should be independently verified.

## ESTIMATE OF LIVING AREA

GROUND LEVEL 71.64 Square metres/ 7.70 Squares

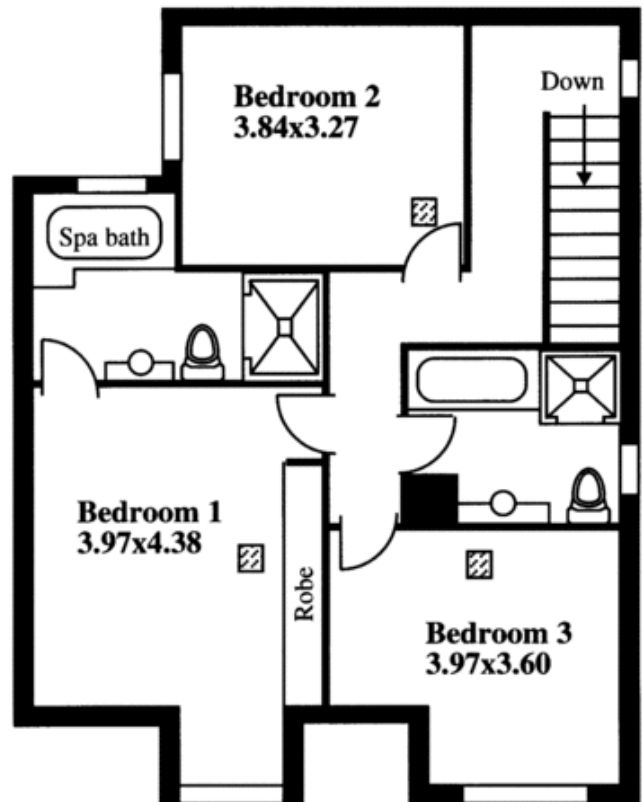
FIRST LEVEL 73.29 Square metres/ 7.87 Squares

SECOND LEVEL 84.09 Square metres/ 9.03 Squares

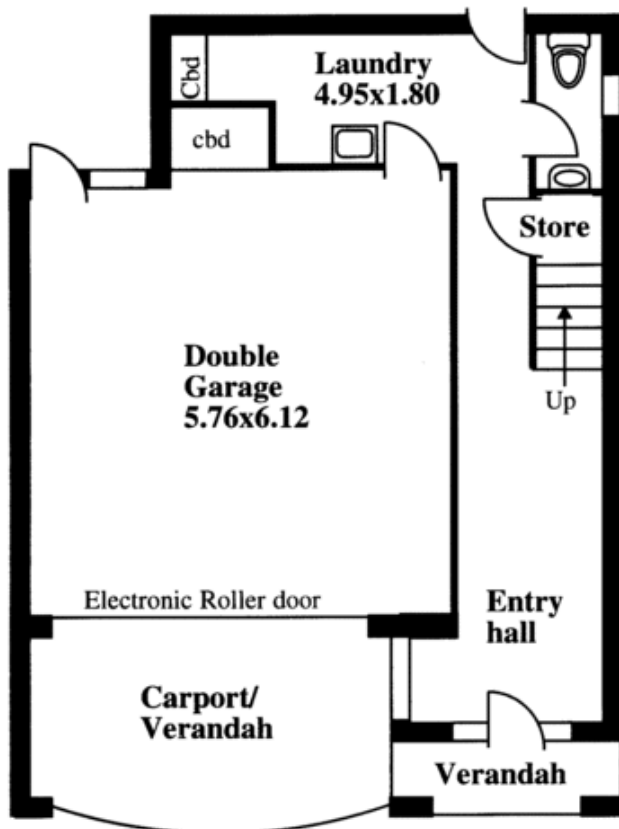
TOTAL 229.01 Square metres/ 24.19 Squares



SECOND LEVEL



GROUND LEVEL



FIRST LEVEL

