

MAGAIN



17 Sunshine Avenue WARRADALE SA

3  1  5 

This nicely maintained established home provides several options with potential to renovate, refurbish or redevelop subject to obtaining the usual consents, with the owners able to offer a rent back arrangement if required by the successful purchaser.

Currently home to two families, this property will appeal to those seeking a substantial corner position, handy to Westfield Marion, just a few minutes walk to bus, train station and less than 10 minutes to Flinders Uni and Glenelg beach.

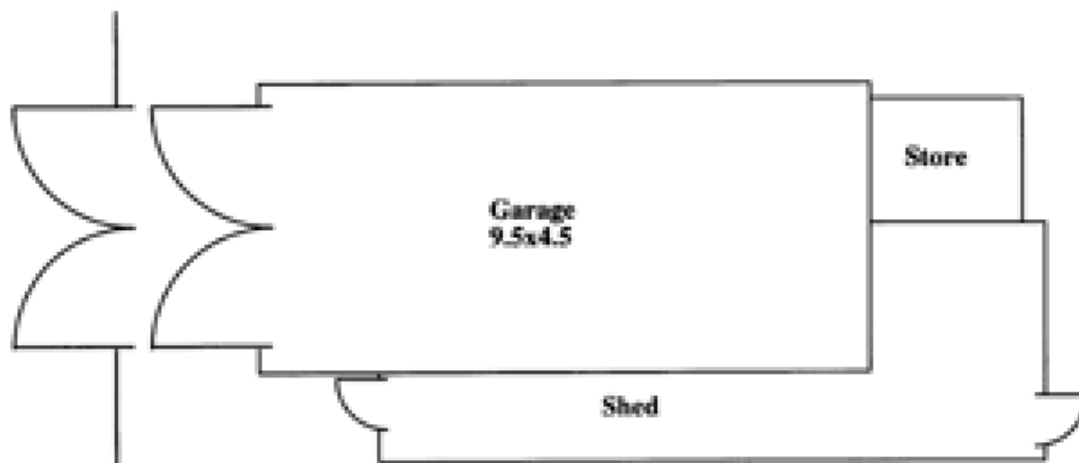
With high ceilings and comprising three good size bedrooms, separate lounge room, updated kitchen with pantry, loads of cupboards and large breakfast bar providing ample workspace plus dining area, separate north facing family room, reverse cycle airconditioning,

Type : House
Building Size : 13 sqm
Land Size : 780 sqm
View : <https://www.magain.com.au/property/17-sunshine-avenue-warradale-sa/8421903>

[For full version visit the website](https://www.magain.com.au)

<https://www.magain.com.au>
Magain Real Estate

765 Marion Road Ascot Park SA
08 8277 1777



SIDE ACCESS FROM AILSA AVENUE

