

MAGAIN

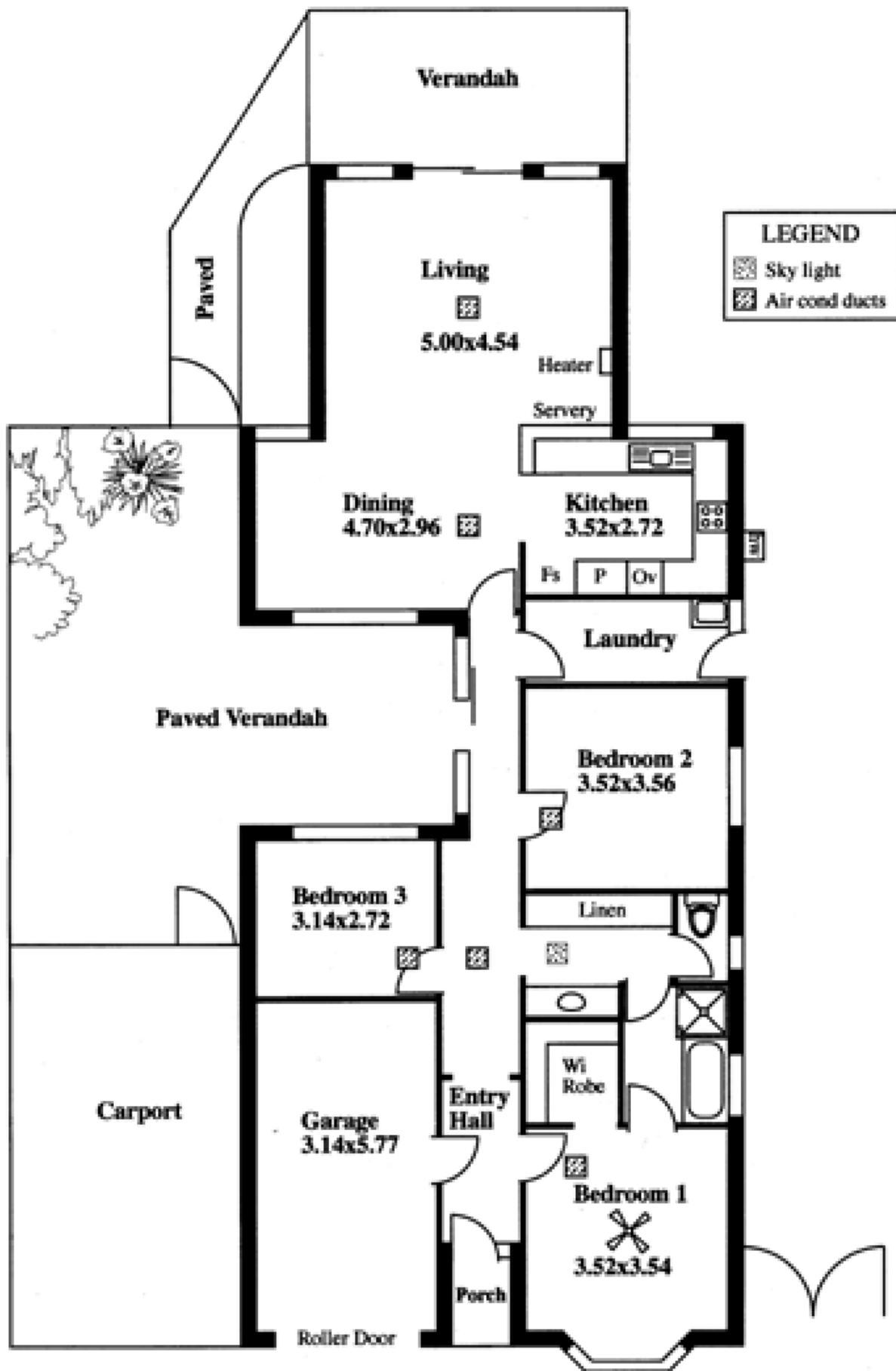


4 Esther Drive WOODCROFT SA

3  1  2 

Deceptively spacious with modern dcor throughout, this trendy yet affordable first hom is ideal for the young couple or family. Featuring a popular floorplan of three bedrooms, the master with walk in robe and two way ensuite bathroom, modern kitchen, open plan living with ducted evaporative cooling and gas heating and a fantastic outdoor entertaining area for relaxing with friends. Lots of added extras and all within walking distance to Woodcroft shops, college and transport.RLA 46284

Type : House
Building Size : 16 sqm
Land Size : 512 sqm
View : <https://www.magain.com.au/property/4-esther-drive-woodcroft-sa/8421925>



This drawing is for illustration purposes only (Drawing is not to scale)

The drawing and the information contained is not intended to be part of any contract. All measurements are approximate and details intended to be relied upon should be independently verified.

ESTIMATE OF AREA

HOUSE 150.05 Square metres/ 16.13 Squares (Including Garage)