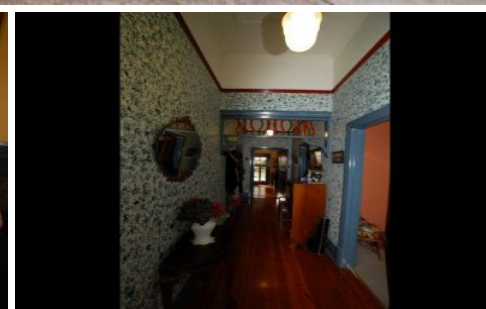
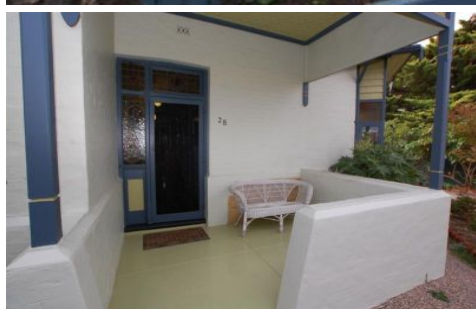


# MAGAIN



## 28 Creslin Terrace CAMDEN PARK SA

3 1 1

This well located home ideally positioned between the City and the Sea and opposite Linear Park, is a rare offering to purchase a piece of your own history. Built in 1910, this Queen Anne Villa has intriguing street appeal and the 'wow' factor flows throughout the rest of the home. The inviting hallway just typical of the era with the 12ft ceilings, picture rail and gives you a taste of the original, ornate doors, handles and light fittings and switches to come.

The home has three bedrooms or as currently used, one as a formal dine. The master bedroom at the front of the home has a very special window place.

Second bedroom with built-ins and third bedroom with ornate fireplace and ceiling rose.

The main living room has a gas heater, polished Baltic floorboards again and a ceiling fan.

[For full version visit the website](#)

**Type** : House  
**Building Size** : 13 sqm  
**Land Size** : 672 sqm  
**View** : <https://www.magain.com.au/property/28-creslin-terrace-camden-park-sa/842194>  
4



**Andrew Boswell**  
08 8381 6000

