




MAGAIN



21 Gardenia Crescent MORPHETT VALE SA

3  1  2 

Nicely established and very well maintained, this home offers lots of space inside and out, two big separate living areas, large backyard and handy to bus, good local schooling, Woodcroft shopping centre and is situated between Bains Road and Woodcroft Drive.

Comprising three good size bedrooms, big master bedroom with walk in robes, lovely separate two way bathroom, large separate lounge and dine plus separate family room with second dining area all nicely tiled, beautiful big open kitchen and neat neutral decor throughout.

Features include heating and cooling for year round comfort, alarm system for optimum security, private lockup carport plus large outdoor undercover entertaining area, with plenty of room to add a pool, or store your boat and caravan, with separate handyman workshed.

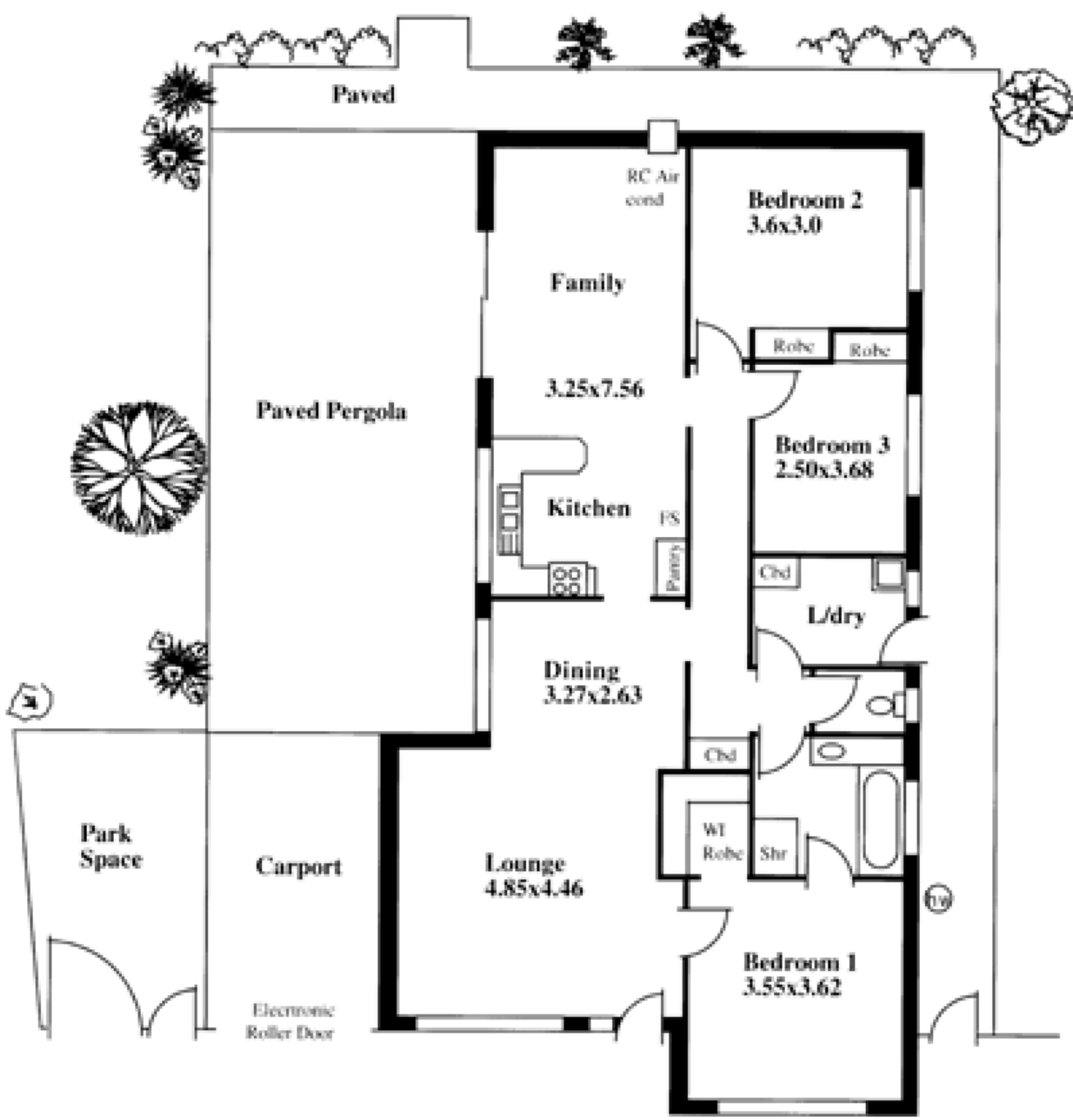
Type : House
Building Size : 14 sqm
Land Size : 706 sqm
View : <https://www.magain.com.au/property/21-gardenia-crescent-morphett-vale-sa/8421950>

[For full version visit the website](https://www.magain.com.au)

<https://www.magain.com.au>
Magain Real Estate

765 Marion Road Ascot Park SA
08 8277 1777

Garden shed



Paved

Paved Pergola

Park Space

Carport

Electronic Roller Door

RC Air cond

Family

3.25x7.56

Kitchen

Dining
3.27x2.63

Lounge
4.85x4.46

Bedroom 2
3.6x3.0

Robe

Robe

Bedroom 3
2.50x3.68

CND

L/dry

CND

Wt Robe

Shr

Bedroom 1
3.55x3.62

TV

FS

Pantry