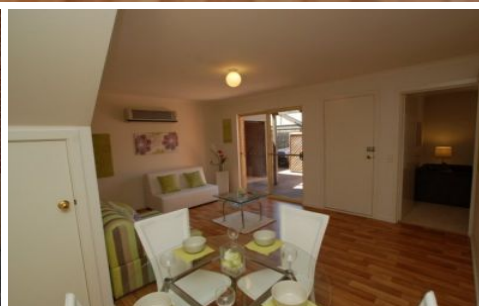


# MAGAIN



2/29 Henley Beach Road MILE END SA

3  1  1 

These popular design townhouses having been selling fast in the group. When you need a location close to the CBD and main transport routes, then look no further than this 3 bedroom townhouse. Rear private lane way access for car parking in the single roller door garage (space for second car) and the townhouses has a private rear paved yard. Very easy to maintain.

Internally the property has a roomy family/dine area with split system a/c overlooked by the large kitchen. Lots of cupboard space. Formal carpeted living room, big laundry and second downstairs toilet. Lovely north facing sun room with entry to the front courtyard and foot access to Henley Beach Road. All bedrooms with built-in robes, big full bathroom and another toilet.

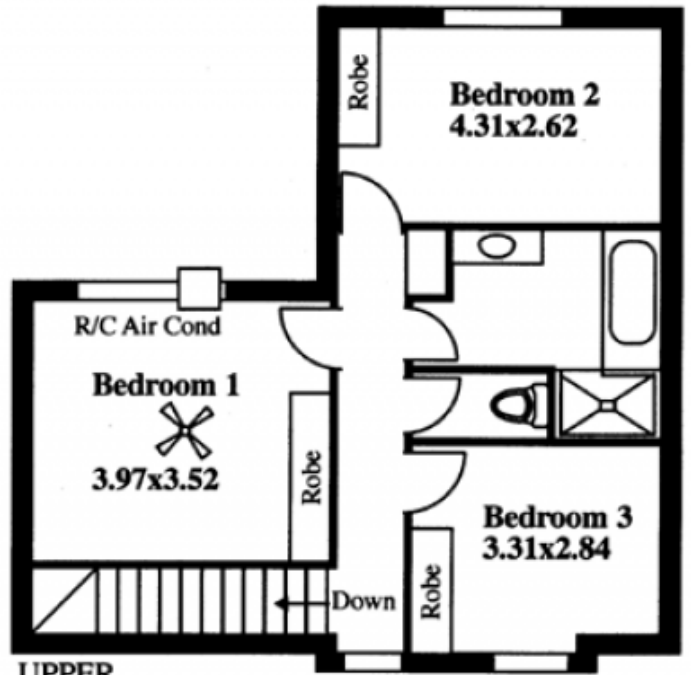
Proving popular with investors and home buyers alike due

**Type** : Townhouse  
**Building Size** : 16 sqm  
**View** : <https://www.magain.com.au/property/22-9-henley-beach-road-mile-end-sa/8421985>

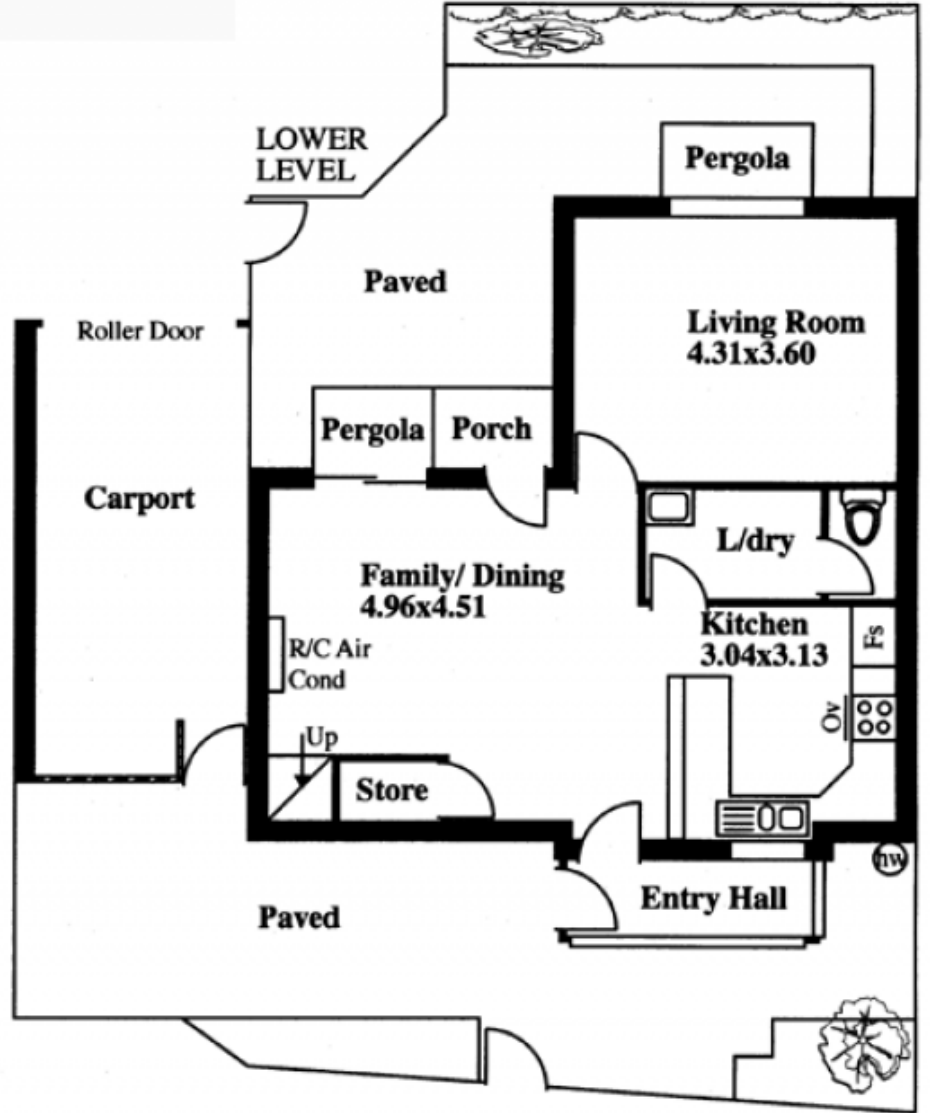
[For full version visit the website](https://www.magain.com.au)

<https://www.magain.com.au>  
Magain Real Estate

765 Marion Road Ascot Park SA  
08 8277 1777



UPPER LEVEL



LOWER LEVEL