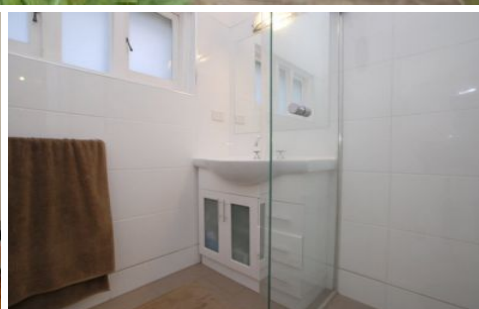


MAGAIN



5 Aberfeldy Avenue EDWARDSTOWN SA

3 1 1

Sited in an excellent location, this character laden Bungalow Circa 1923 offers an outstanding opportunity to make it your own.

The current owner has updated both the bathroom and kitchen with absolute quality and flair, so the "hard stuff" is already done.

Being on a large 700 sqm allotment, there is plenty of room to extend and add on a large family room.

Currently the home offers two double bedrooms and sleep out, formal lounge and stunning eat in kitchen.

Outside is a further brick building which could be upgraded to a detached rumpus. Other features include polished timber floor boards and ducted reverse cycle air conditioning.

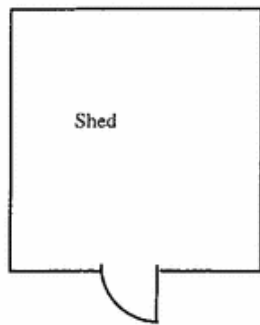
Lock up carport, rear North facing verandah and large level

Type : House
Building Size : 12 sqm
View : <https://www.magain.com.au/property/5-aberfeldy-avenue-edwardstown-sa/8421990>

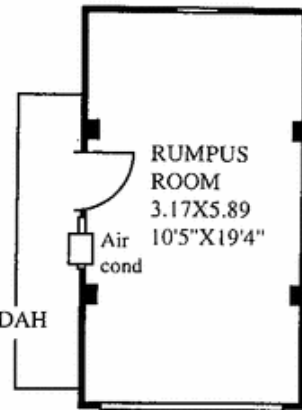


Jane Nelson
08 8277 1777

[For full version visit the website](https://www.magain.com.au)



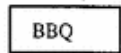
Shed



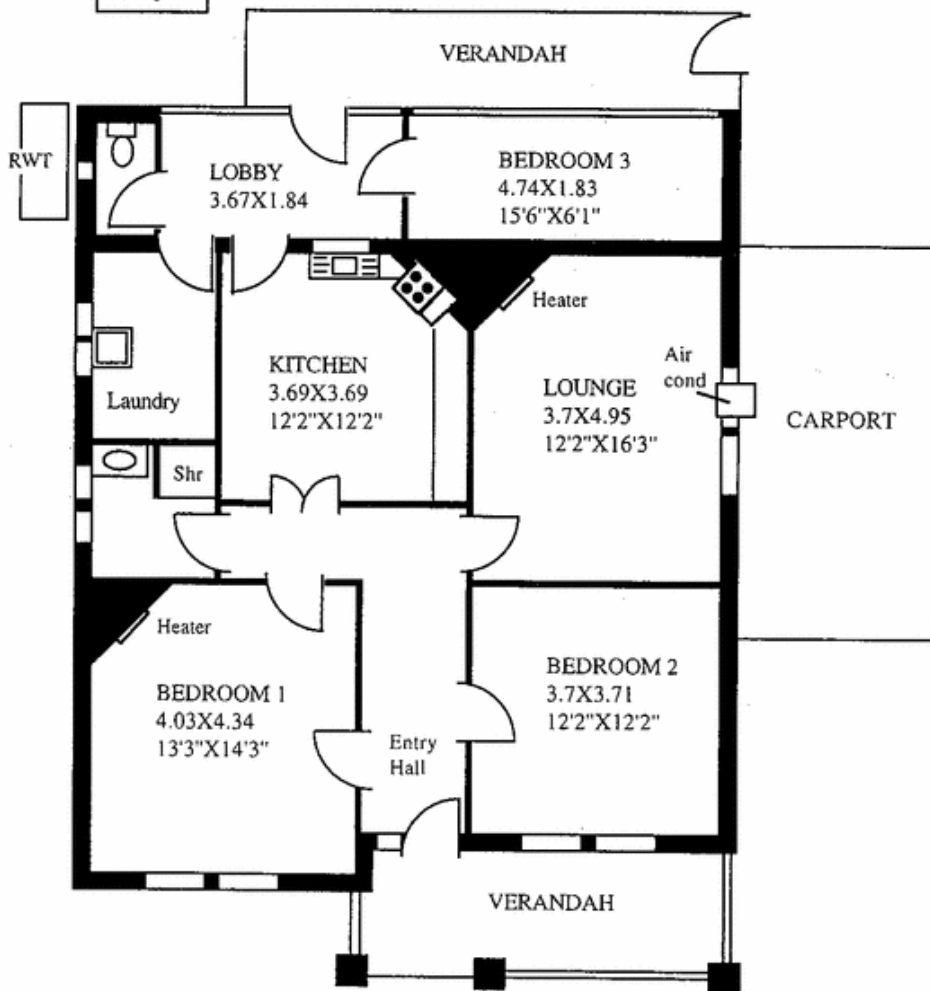
RUMPUS ROOM
3.17X5.89
10'5"X19'4"

Air cond

VERANDAH



BBQ



VERANDAH

RWT

LOBBY
3.67X1.84

BEDROOM 3
4.74X1.83
15'6"X6'1"

Heater

Laundry

KITCHEN
3.69X3.69
12'2"X12'2"

LOUNGE
3.7X4.95
12'2"X16'3"

Air cond

CARPORT

Shr

Heater

BEDROOM 1
4.03X4.34
13'3"X14'3"

BEDROOM 2
3.7X3.71
12'2"X12'2"

Entry Hall

VERANDAH