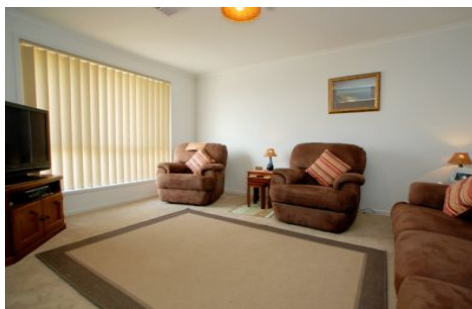


MAGAIN



16 Albany Way SEAFORD RISE SA

3  1  2 

Peacefully located on the high side of the road with outlooks towards Pedler Creek reserve, this two year old home will impress.

Just a short distance to excellent beaches and with all facilities nearby, the home offers good kerbside appeal and comprises three bedrooms (all with robes), formal lounge plus open dining/kitchen area (stainless steel appliances).

The home conveys the high standards that you would expect of a two-year-old, and ducted reverse cycle air conditioning is a feature throughout.

Externally, the 450sqm allotment features double garage, all-weather entertaining and fully landscaped, low

Type : House
Building Size : 13 sqm
View : <https://www.magain.com.au/property/16-albany-way-seaford-rise-sa/8422079>

[For full version visit the website](https://www.magain.com.au)

<https://www.magain.com.au>
Magain Real Estate

765 Marion Road Ascot Park SA
08 8277 1777

