

MAGAIN



20C Byron Avenue CLOVELLY PARK SA

3  1  2 

Superbly presented townhouse (c2003), peacefully sited in an area of ever-increasing demand. Just moments from Flinders University & Hospital and with road and rail transport just moments from your door, rental returns are obviously very promising.

Set in an attractive group of five, the home comprises formal living, pristine kitchen and dining area, from where sliding doors lead to secure courtyard gardens.

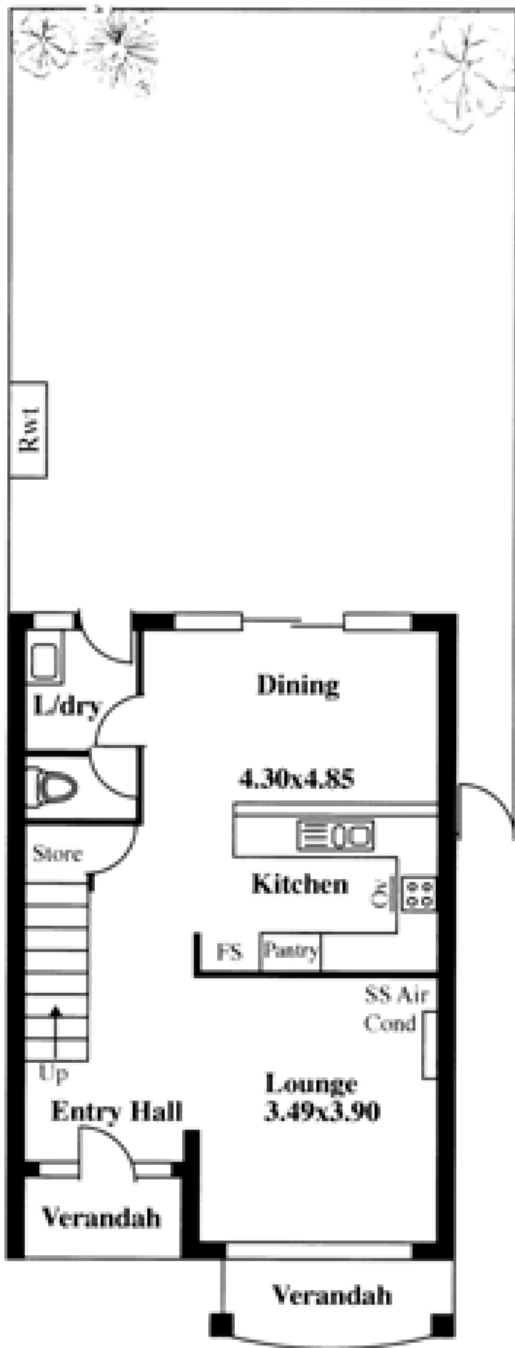
Upstairs, the home boasts three generous bedrooms including an exceptionally large master suite, complete with private balcony, access to 2-way ensuite bathroom and spacious robes.

Type : House
Building Size : 12 sqm
View : <https://www.magain.com.au/property/20c-byron-avenue-clovelly-park-sa/8422149>

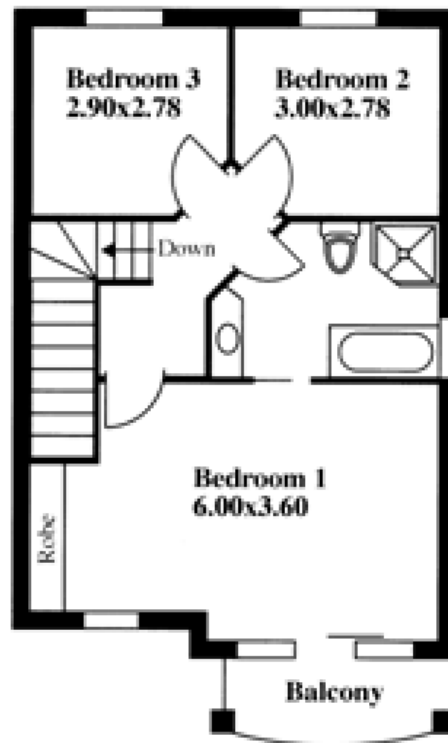
[For full version visit the website](https://www.magain.com.au)

<https://www.magain.com.au>
Magain Real Estate

765 Marion Road Ascot Park SA
08 8277 1777



GROUND FLOOR



UPSTAIRS

