




MAGAIN



4 Saxon Street CLOVELLY PARK SA

3  2  2 

(Formerly known as Drury Terrace - just off Byron Avenue)

Without doubt one of the finest near new homes we have had the pleasure to offer this year, extremely spacious, very comfortable and highly convenient, freestanding with no joining walls and on own Torrens Title, this lovely residence will appeal to professional couple seeking plenty of room for entertaining inside and out.

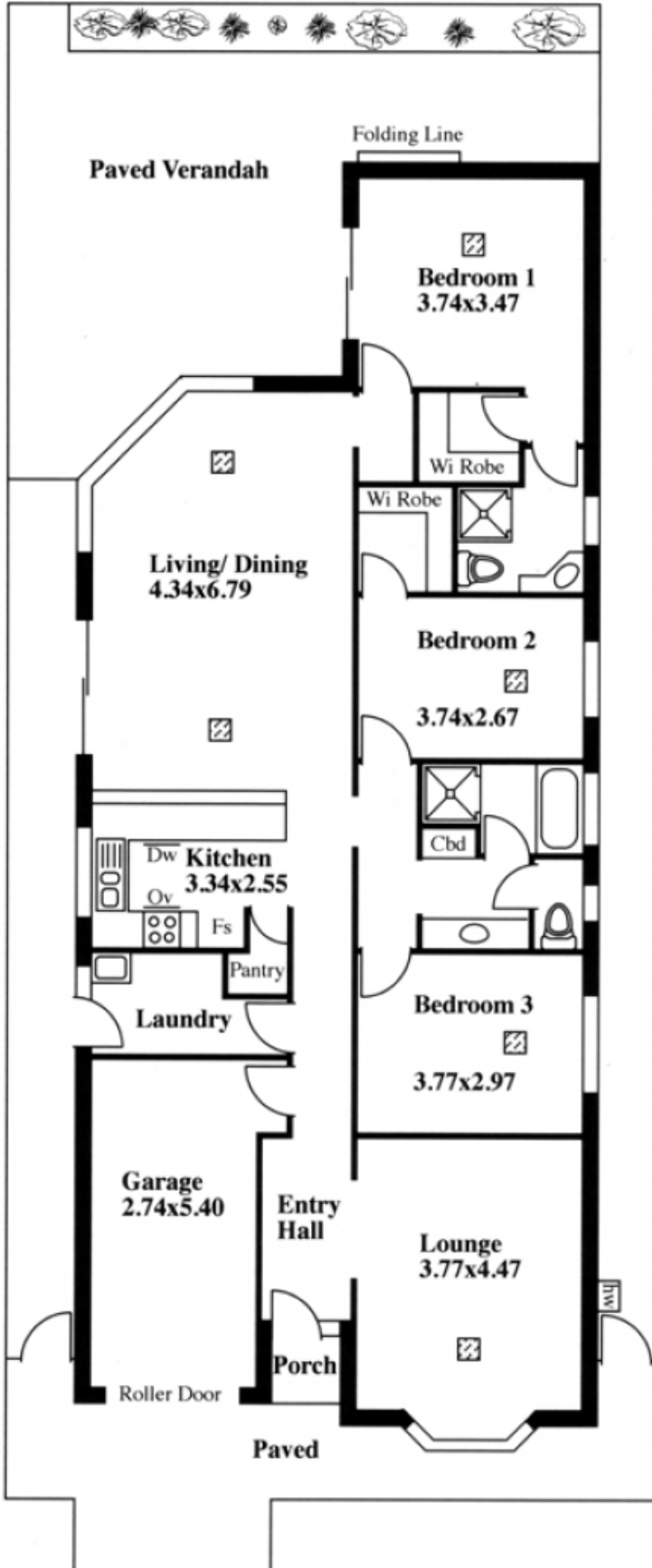
Featuring front formal lounge, beautiful big kitchen with large walk in pantry, loads of cupboards, plenty of bench space, dishwasher, gas hotplates and electric underbench oven plus large wide breakfast bar, this home provides plenty of space for both formal and informal entertaining with second separate living area.

[For full version visit the website](https://www.magain.com.au/property/4-saxon-street-clovelly-park-sa/8422187)

Type : House
Building Size : 17 sqm
View : <https://www.magain.com.au/property/4-saxon-street-clovelly-park-sa/8422187>

Garden Shed

4 Saxon Street, Clovelly Park



ESTIMATE OF AREA

HOUSE 160.06 Square metres/ 17.20 Squares
(Including Garage)

LEGEND

▨ Air cond ducts