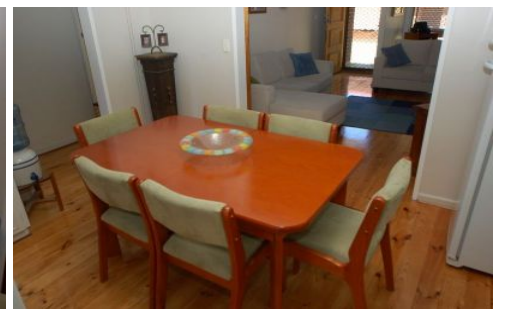


MAGAIN



6-57 Wallala Avenue PARK HOLME SA

3 1 1

This very good size three bedroom unit is solid brick with terra cotta tiled roof and is extremely comfortable, the perfect first home or alternatively, have us arrange tenants for you when the owners move out if you're looking more for long term investment.

With large front lounge and neutral decor throughout, there is lovely warm gas heating plus ducted A/C for year round comfort, a neat kitchen plus an adjacent dining, a lovely bathroom, separate laundry, own backyard, toolshed, storeroom and undercover parking.

Handy to bus nearby on Hendrie Street and approx 15 minutes from town and close to Marion shopping centre, Glenelg and Flinders University, to obtain more details,

[For full version visit the website](#)

Type : Unit
Building Size : 10 sqm
View : <https://www.magain.com.au/property/657-wallala-avenue-park-holme-sa/8422300>

