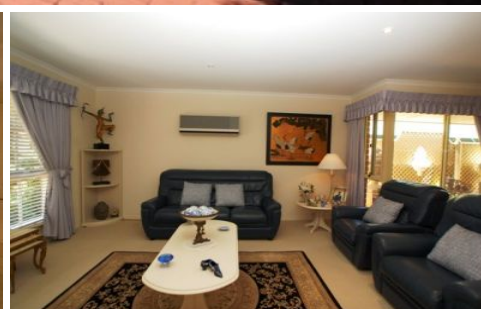


# MAGAIN



## 2 Lomandra Place FLAGSTAFF HILL SA

3 2 2

Presented with perfection and quality throughout, this stunning Courtyard home will impress the most fastidious buyer with its design and style throughout.

The entrance leads through to a gorgeous formal lounge and dining room which have courtyard and garden views from the picture windows and sliding door.

The master bedroom with an ensuite, walk in robe and retreat area has a sliding door also to the private courtyard with water feature.

At the centre of the home is a fabulous kitchen with granite bench tops, three European stainless steel ovens (one of which is a multi function convection microwave), stainless steel range hood, ceramic hotplates and inter-grated dishwasher. There is even room for a casual meals area

**Type** : House  
**Building Size** : 21 sqm  
**View** : <https://www.magain.com.au/property/2-lomandra-place-flagstaff-hill-sa/8422317>



**Jane Nelson**  
08 8277 1777

[For full version visit the website](https://www.magain.com.au)

<https://www.magain.com.au>  
Magain Real Estate

765 Marion Road Ascot Park SA  
08 8277 1777

