




MAGAIN



8-15 Hendrie Street MORPHETTVILLE SA

2  1  1 

just a few minutes drive to the tram, this nicely presented solid brick townhouse features a lovely big near new kitchen dining area with floating floors, two good size bedrooms, both with built in robes and a large fully carpeted separate lounge room.

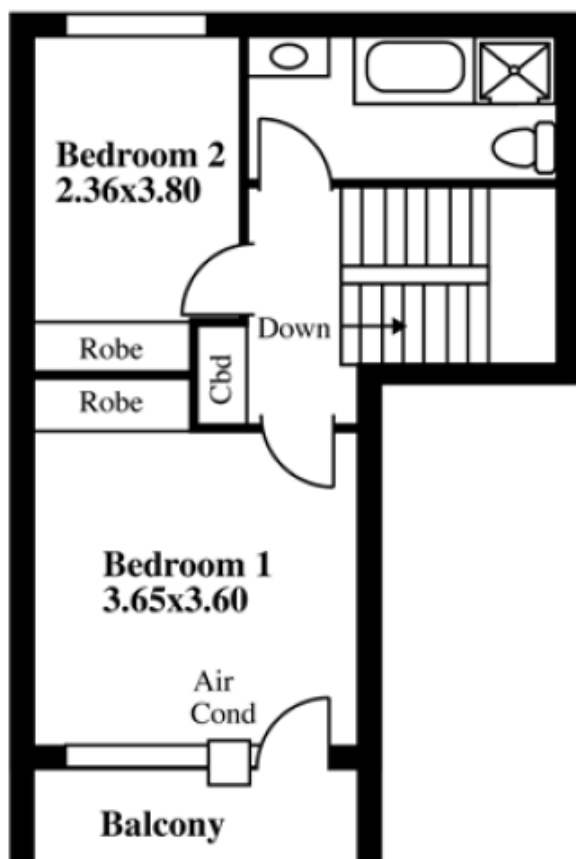
With high ceilings, airconditioning & neutral decor throughout, bathroom and second toilet upstairs, plus balcony to master bedroom, there is a small private backyard, north facing with paved pergola area and bus stop out front approximately 50 metres away.

With attached carport and north facing backyard, the home is within easy reach of Marion, Flinders Uni and the Glenelg shopping precinct, this is the ideal first home or

[For full version visit the website](https://www.magain.com.au/property/81-5-hendrie-street-morphettville-sa/8422335)

Type : House
Building Size : 10 sqm
View : <https://www.magain.com.au/property/81-5-hendrie-street-morphettville-sa/8422335>

UPSTAIRS



GROUND FLOOR



ESTIMATE OF AREA

GROUND FLOOR 47.02 Square metres/ 5.05 Squares

UPSTAIRS 44.83 Square metres/ 4.81 Squares

TOTAL 91.80 Square metres/ 9.87 Squares