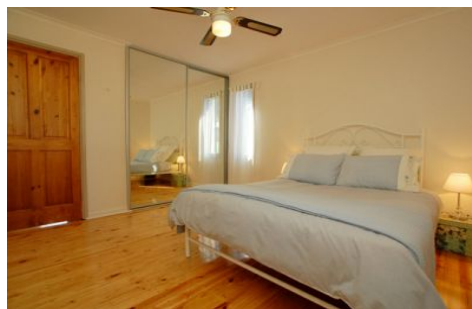





MAGAIN



4 Hodge Court MORPHETT VALE SA

3  1  5 

Presented to perfection, this superbly appointed home will impress with its instant impression and appealing price tag.

Peacefully situated in a small cul-de-sac, yet handy for schools, transport and facilities, the home comprises three bedrooms - including a large master with brand new built-in robes.

Superbly rendered frontage ensures instant kerbside appeal and the home offers unlimited off-street parking, with easy access to the rear of the property (perfect for additional garaging).

Polished timber floors are a feature throughout, and the home includes spacious formal lounge, impressive timber

Type : House
Building Size : 11 sqm
View : <https://www.magain.com.au/property/4-hodge-court-morphett-vale-sa/8422361>

[For full version visit the website](https://www.magain.com.au)

<https://www.magain.com.au>
Magain Real Estate

765 Marion Road Ascot Park SA
08 8277 1777