

# MAGAIN



## 30 Lloyd Street ST MARYS SA

3  1 

For the full details of this solid home call Jane Nelson or Kerry Horne on 0428 830 526.

Of solid brick construction and in original condition, this home is sited on a corner allotment of approximately 770 square metres in the rapidly changing suburb of St Marys the property offers:

3 good size bedrooms, original kitchen and bathroom, spacious living areas and loads of yard space with 2 street access.

For further details of this property with potential, contact Jane Nelson on 0418 820 655 or Kerry Horne on 0428 830 526.

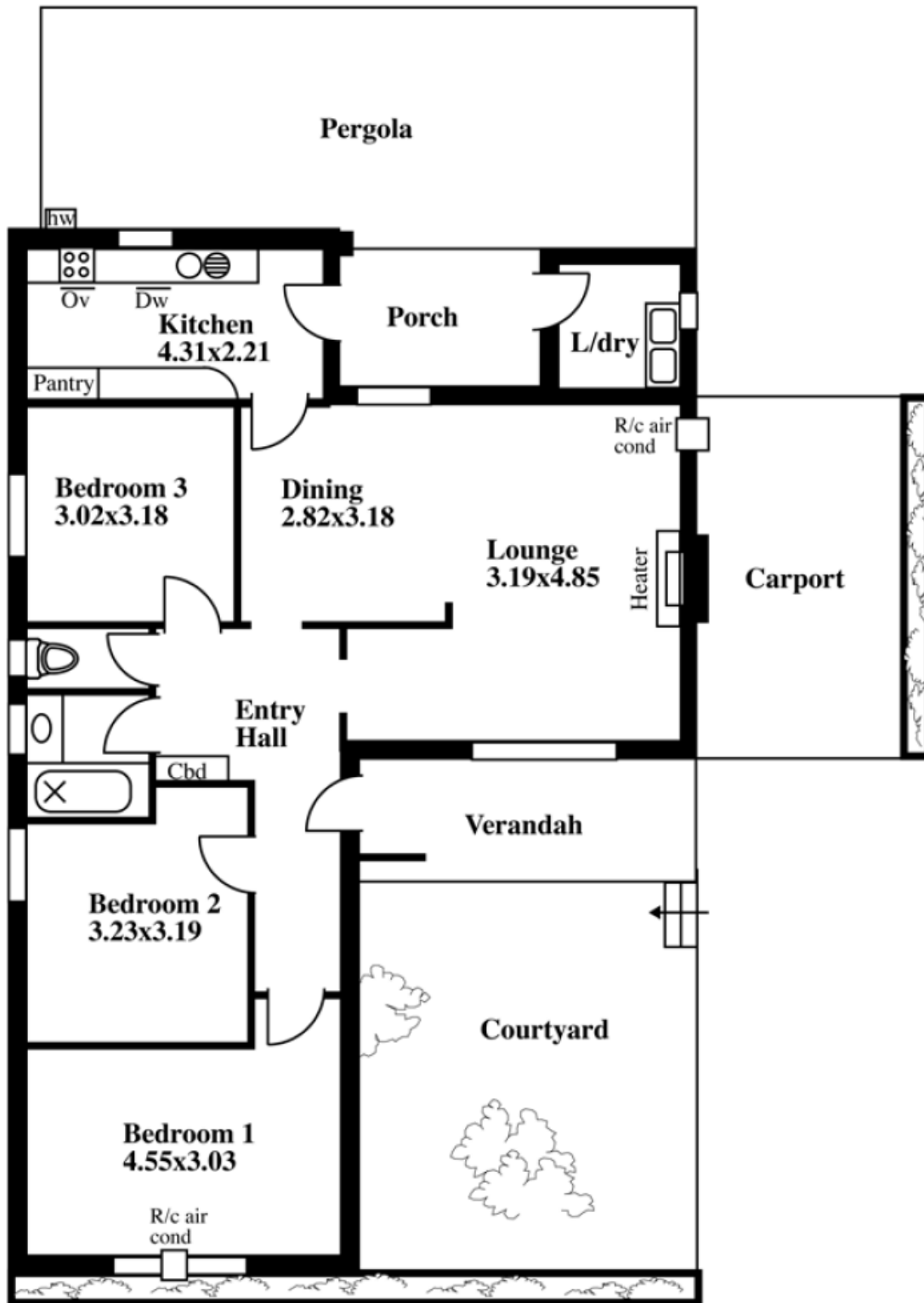
**Type** : House  
**Building Size** : 12 sqm  
**View** : <https://www.magain.com.au/property/30-lloyd-street-st-marys-sa/8422447>

Garden  
Shed

# 30 Lloyd Street, St. Marys

This drawing is for illustration purposes only  
(Drawing is not to scale)

The drawing and the information contained is not intended to be part of any contract. All measurements are approximate and details intended to be relied upon should be independently verified.



ESTIMATE OF LIVING AREA  
107.03 Square metres/ 11.50 Squares