

# MAGAIN



2-30 Richard Avenue MITCHELL PARK SA

3 1 1

Built in 2007, this picture perfect townhouse should be top of your viewing list. Boasting features galore, all it needs is for you to move in and start enjoying your new lifestyle.

In a small group of just three community titled townhouses, this free standing abode has open plan living in mind. Downstairs has space for a large lounge and dining table all overlooked by the modern kitchen with Euro dishwasher, stainless steel oven and gas top with plenty of cupboard and bench work space available.

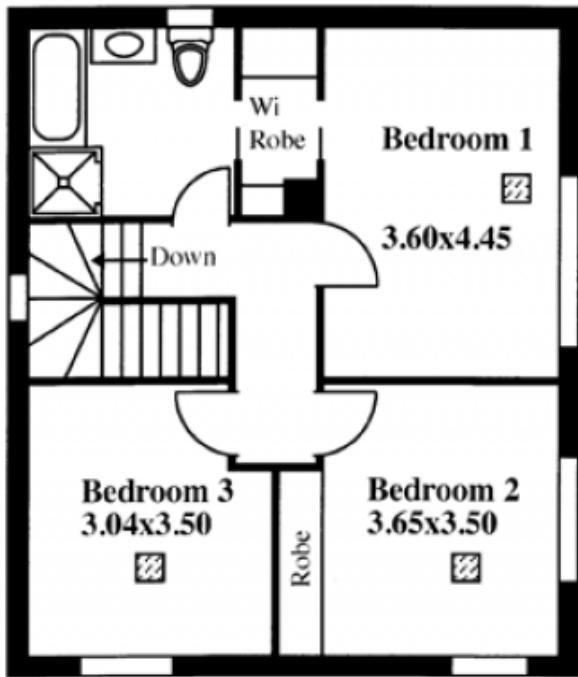
The living area leads into the real highlight of the home-the covered outdoor entertaining area. Purpose built for relaxation and/or hosting your guests, it has been designed for all weather comfort, with Ziptrak cafe blinds, down lights, a ceiling fan, heat lamps and built in speakers. The lovely outlook over the low care established garden with

[For full version visit the website](https://www.magain.com.au)

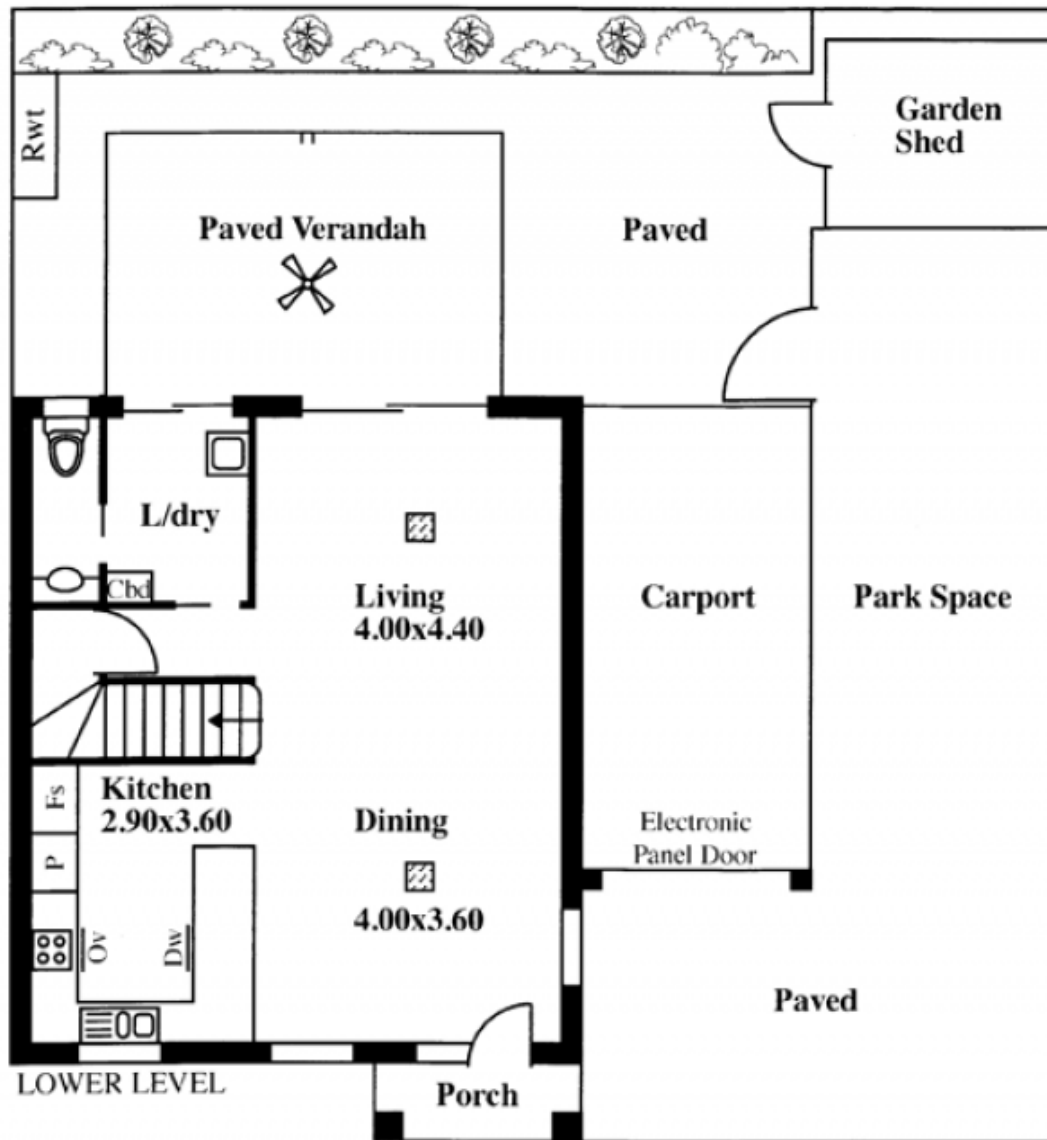
**Type** : Townhouse  
**Building Size** : 14 sqm  
**View** : <https://www.magain.com.au/property/23-0-richard-avenue-mitchell-park-sa/8422499>



**Andrew Boswell**  
0410 444 782



UPPER LEVEL



LOWER LEVEL