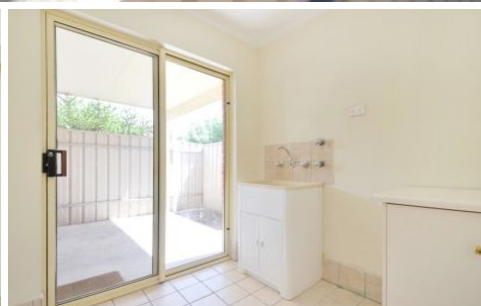


MAGAIN



6/149 Anzac Highway KURRALTA PARK SA

3 1 2

A spacious Community Titled Townhouse sited in a handy location halfway between the city and the beach.

Offering a wonderful open plan tiled living area which opens out to a private courtyard & garden and adjoins the modern kitchen with stainless steel appliances.

Upstairs are three bedrooms, master with robes and updated main bathroom & WC. Lock up carport and a convenient 2nd parking space.

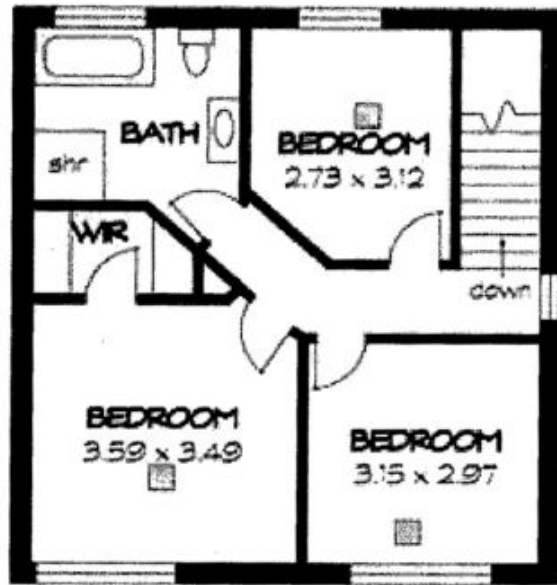
Other features include ducted reverse cycle air conditioning, neutral tonings and quality fixtures. Previously let to long term excellent tenants at \$395 week.

This delightful property represents excellent value to either the investor or couple looking for character, natural light and location.

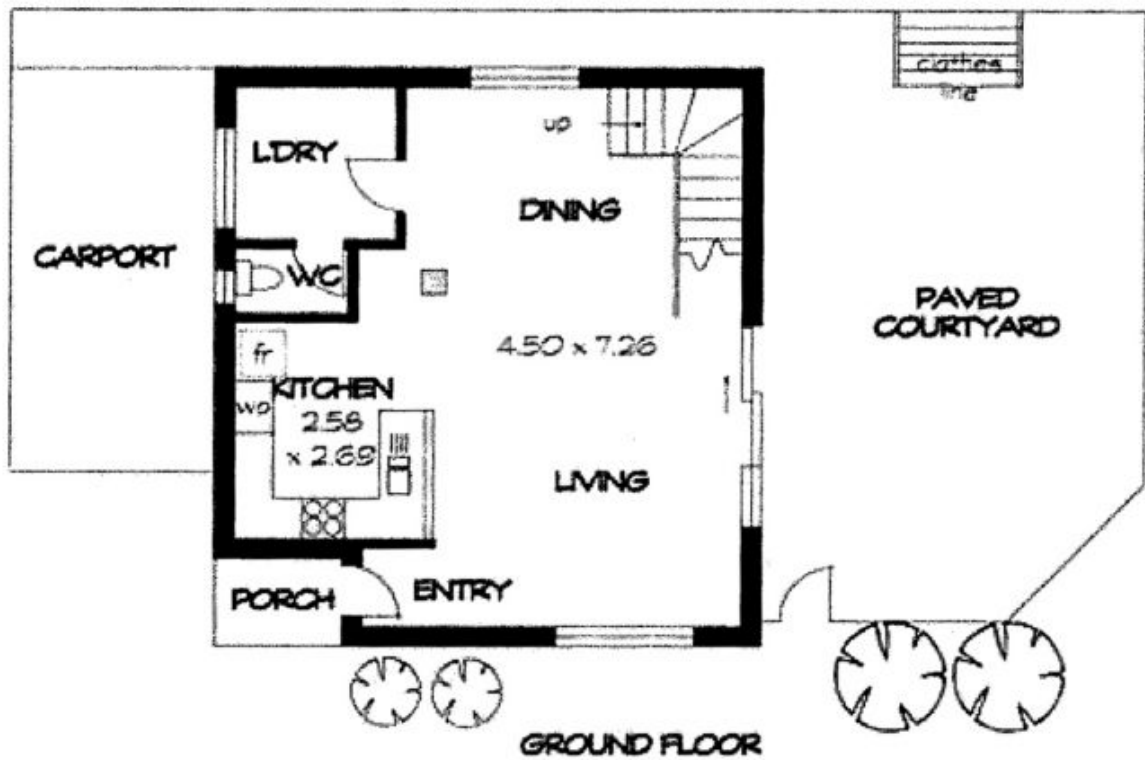
Type : Townhouse
Building Size : 15 sqm
Land Size : 130 sqm
View : <https://www.magain.com.au/property/6149-anzac-highway-kurralta-park-sa/8422507>



Jane Nelson
08 8277 1777



FIRST FLOOR



GROUND FLOOR