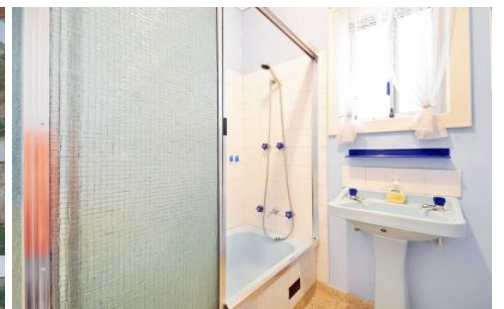


MAGAIN



3 Grenache Avenue MODBURY SA

3 1 5

sure to provide plenty of options, this original solid brick home sits on a large block with a 33.5m frontage and has a big double garage and also room for boat, caravan and several vehicles. The home is also ideal for the handy couple that don't mind rolling up the sleeves and doing painting and repairs.

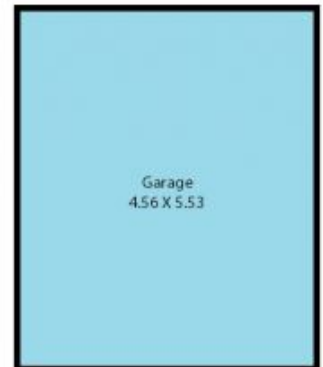
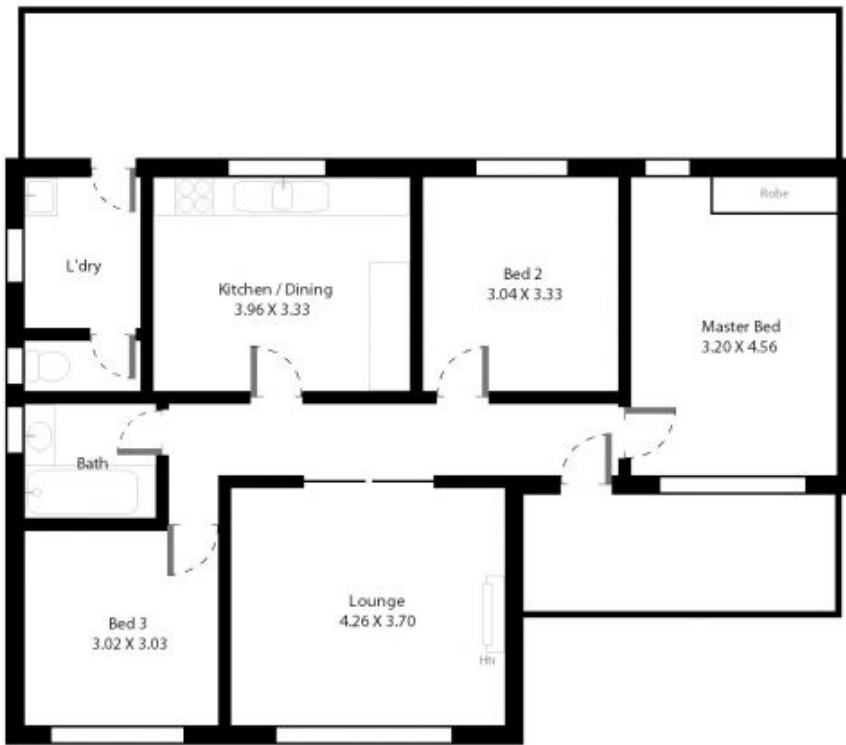
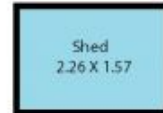
situated on a large block the home is comprised of three bedrooms, it has a separate front lounge room, an original kitchen dining area with gas oven, original bathroom plus a separate laundry, it has timber floors beneath existing floor coverings, a rear verandah plus fruit trees in the back garden.

handy to bus, schooling, nearby park and good local

[For full version visit the website](#)

Type : House
Building Size : 11 sqm
Land Size : 784 sqm
View : <https://www.magain.com.au/property/3-grenache-avenue-modbury-sa/8422512>

3 Grenache Avenue Modbury, South Australia.



Picture intended as a reference only. Any specific measurements required should be obtained by an independent surveyor.