

# MAGAIN



37 Harcourt Avenue CLOVELLY PARK SA

3 1 4

just off Daws Road and one of the original homes in the district, set on a very large 822sqm allotment with beautiful gardens and a nice big backyard with plenty of room for the kids to play, this home is perfect for the family looking for options now and into the future, solid brick with tiled roof, timber floors beneath existing floor coverings, high ceilings and a separate lounge room, three bedrooms, large original kitchen dining room with loads of space, original bathroom, separate toilet and big rear verandah.

with a huge garage and workshop area in the north facing backyard, the dimensions of this residential rectangular allotment are 17.98m in width and 45.72m in depth which offers some future potential for those looking to redevelop either now or in later years subject to obtaining all of the

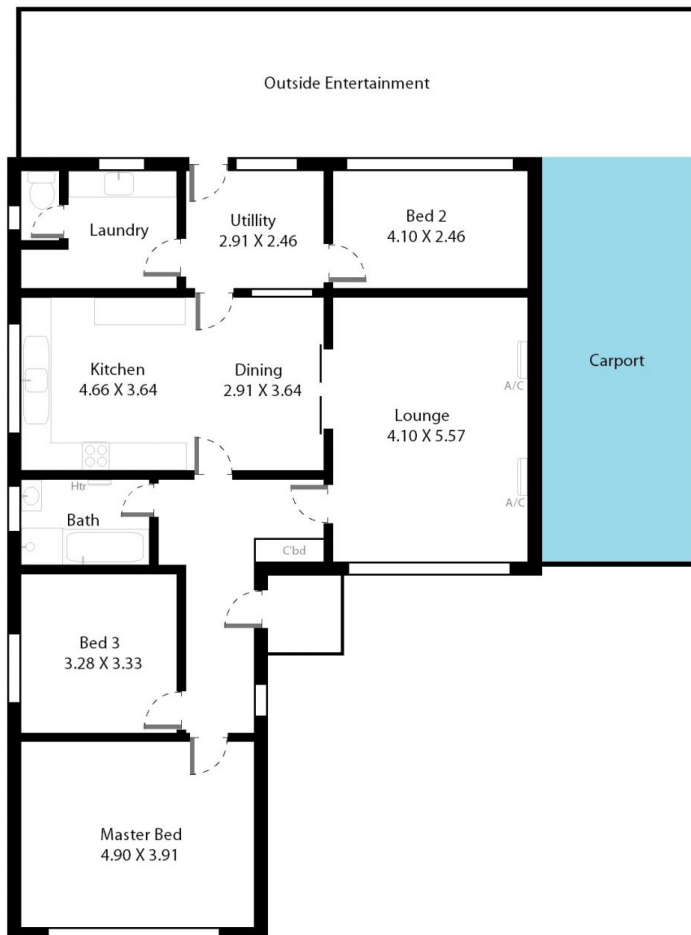
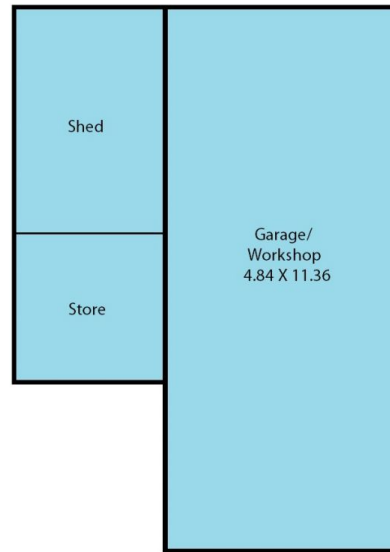
**Type** : House  
**Building Size** : 14 sqm  
**Land Size** : 822 sqm  
**View** : <https://www.magain.com.au/property/37-harcourt-avenue-clovelly-park-sa/8422518>

[For full version visit the website](https://www.magain.com.au)

<https://www.magain.com.au>  
Magain Real Estate

765 Marion Road Ascot Park SA  
08 8277 1777

37 Harcourt Avenue Clovelly Park, South Australia.



Picture intended as a reference only. Any specific measurements required should be obtained by an independent surveyor.