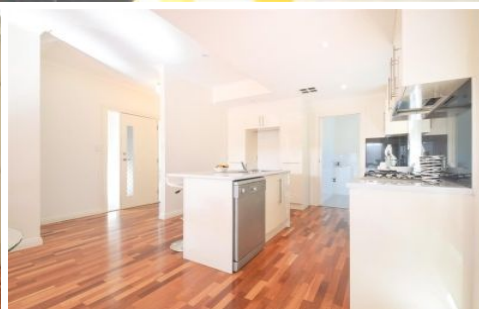


# MAGAIN



15B Condada Avenue PARK HOLME SA

3  2  2 

absolutely fabulous & around five years old, this large two storey family home has three bedrooms with two bathrooms and two separate living areas, a lovely big kitchen with pantry and dishwasher plus an undercover outdoor patio at the rear plus drive through lockup garage.

features high ceilings, separate family room, ducted RC A/C for year round comfort, large lounge and dining area, lovely master bedroom with own walk in robes plus beautifully separate ensuite bathroom, with built in robes and quality carpeting to bedrooms two and three also.

beautifully presented and well situated handy to bus, train and good local shopping, with the city CBD area around 20 minutes drive and only 10 minutes to Glenelg, Marion and

**Type** : House  
**Building Size** : 16 sqm  
**View** : <https://www.magain.com.au/property/15-b-condada-avenue-park-holme-sa/8422549>

[For full version visit the website](https://www.magain.com.au)

<https://www.magain.com.au>  
Magain Real Estate

765 Marion Road Ascot Park SA  
08 8277 1777

15 Condada Avenue Park Holme, South Australia.



**Picture intended as a reference only.** Any specific measurements required should be obtained by an independent surveyor.