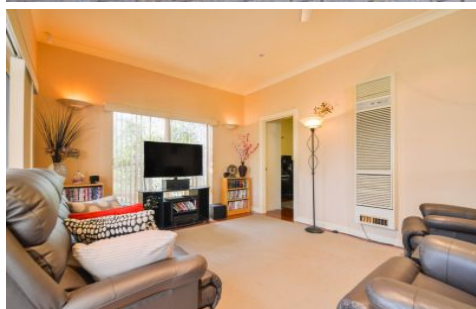


# MAGAIN



## 17 Margaret Cutten Grove ABERFOYLE PARK SA

3 2 2

Sited in an idyllic location adjoining a natural reserve on two sides and overlooking a park is this spacious quality built home which offers a lifestyle.

Boasting high ceilings, ducted gas heating & cooling and security, it offers a wide entrance which leads to the tiled formal lounge/dine.

The spacious kitchen with dishwasher & ample cupboards has a glorious outlook to the rear entertaining and parklands. All three bedrooms have built in robes and the master has an ensuite.

The large family room opens out to a gabled undercover

[For full version visit the website](https://www.magain.com.au/property/17-margaret-cutten-grove-aberfoyle-park-sa/8422566)

**Type** : House  
**Building Size** : 20 sqm  
**Land Size** : 487 sqm  
**View** : <https://www.magain.com.au/property/17-margaret-cutten-grove-aberfoyle-park-sa/8422566>



**Jane Nelson**  
08 8277 1777

