

MAGAIN



69 Condada Avenue PARK HOLME SA

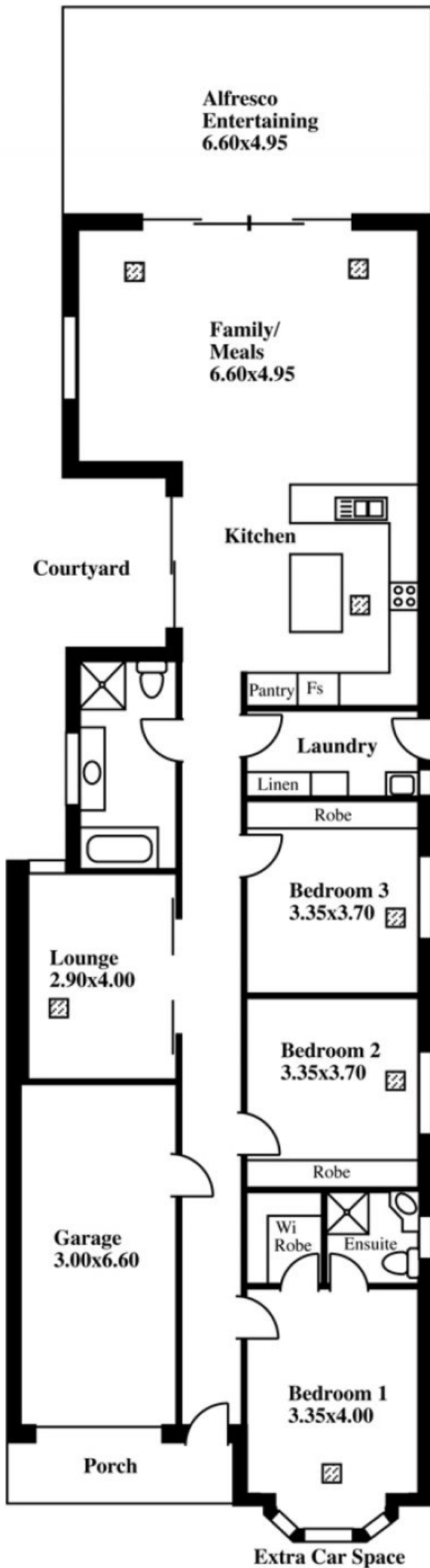
3  2  2 

the best and largest near new home we've seen in years, 2011 built and picture perfect plus big rear garden, brilliant federation style and stone fronted, ideal for the large family that must have two separate living areas, classic finishes, high quality appointments with absolute perfection in presentation and ideal for those that love year round entertaining.

features include auto front fencing security gate, polished wooden floors, 2.7m high ceilings, decorative arch in entrance hall, large master bedroom with feature bay windows, superb ensuite & walk in robes, two additional queen size bedrooms both with extra large built in robes plus central formal lounge or which would be ideal as a home theatre.

[For full version visit the website](#)

Type : House
Building Size : 23 sqm
View : <https://www.magain.com.au/property/69-condada-avenue-park-holme-sa/842257>
1



**Alfresco
Entertaining
6.60x4.95**

**Family/
Meals
6.60x4.95**

Kitchen

Courtyard

Pantry Fs

Laundry

Linen

Robe

**Bedroom 3
3.35x3.70**

**Bedroom 2
3.35x3.70**

Robe

**Wi
Robe**

Ensuite

**Bedroom 1
3.35x4.00**

**Lounge
2.90x4.00**

**Garage
3.00x6.60**

Porch

Extra Car Space