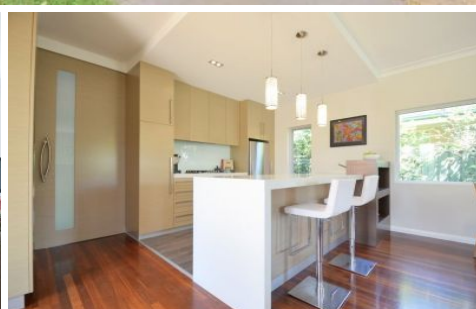
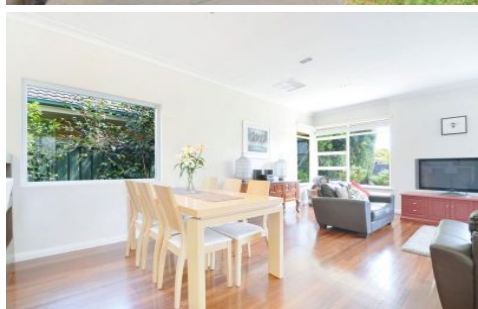


# MAGAIN



## 66 Beadnall Terrace GLENGOWRIE SA

3  2  6 

perfect position and beautifully updated, this family home with huge double garage offers the complete package, high ceilings, solid brick, superb jarrah flooring, three bedrooms and beautifully crafted built in robes, two bathrooms, an ultra modern updated kitchen with plenty of bench space, large pantry, dishwasher, breakfast bar, lovely dining area, two separate living areas including a nice big lounge with feature gas fireplace, ducted air-conditioning for year round comfort, additional kids play room, and so much more.

handy to Glenelg and the tramline, additional features include large carport, enormous double garage with work pit and wine cellar, separate exercise gym or teenage retreat, lovely private back garden with kids cubby house, covered outdoor barbecue area plus plenty of room for

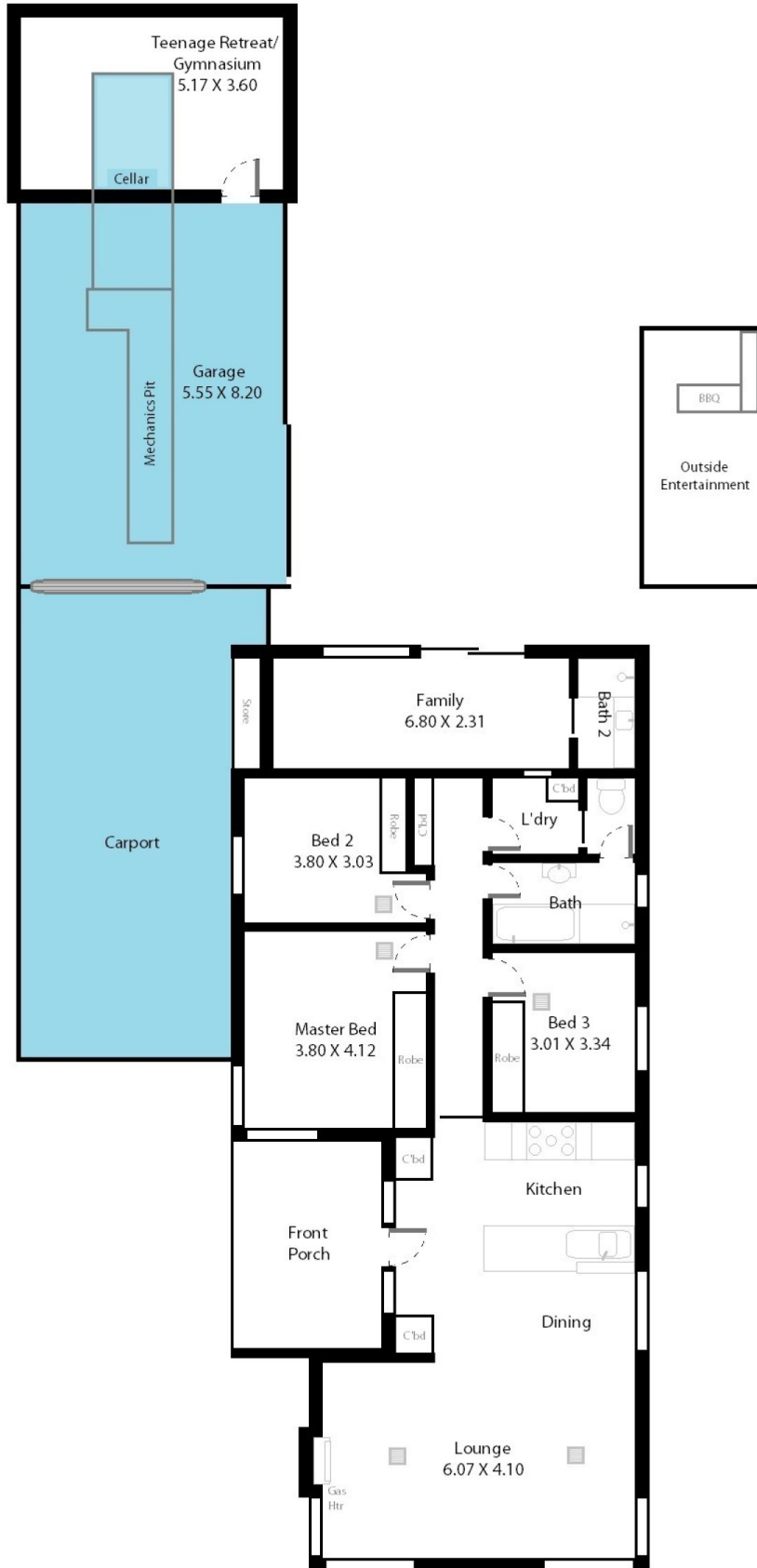
**Type** : House  
**Land Size** : 600 sqm  
**View** : <https://www.magain.com.au/property/66-beadnall-terrace-glengowrie-sa/8422589>

[For full version visit the website](https://www.magain.com.au)

<https://www.magain.com.au>  
Magain Real Estate

765 Marion Road Ascot Park SA  
08 8277 1777

66 Beadnall Terrace Glengowrie, South Australia.



**Picture intended as a reference only.** Any specific measurements required should be obtained by an independent surveyor.