

MAGAIN



8 Malvern Court ABERFOYLE PARK SA

3 3 6

Sited on a large terraced allotment of approximately 1035 square metres, this two storey home, built in 1978 with delightful views offers an opportunity for the home renovator.

The downstairs section comprises a second kitchen, bedroom, balcony, separate laundry, separate w/c and bathroom, making it the ideal teenager/student or granny flat accommodation.

Upstairs is a spacious lounge with split system and views, balcony, kitchen/dine, two bedrooms, ensuite and main bathroom.

There is ample parking with a double garage under main roof and three additional open space parks. An undercover entertaining area is located at the side of the home. The huge terraced garden gives lots of opportunity and there is

Type : House
Building Size : 22 sqm
View : <https://www.magain.com.au/property/8-malvern-court-aberfoyle-park-sa/8422603>



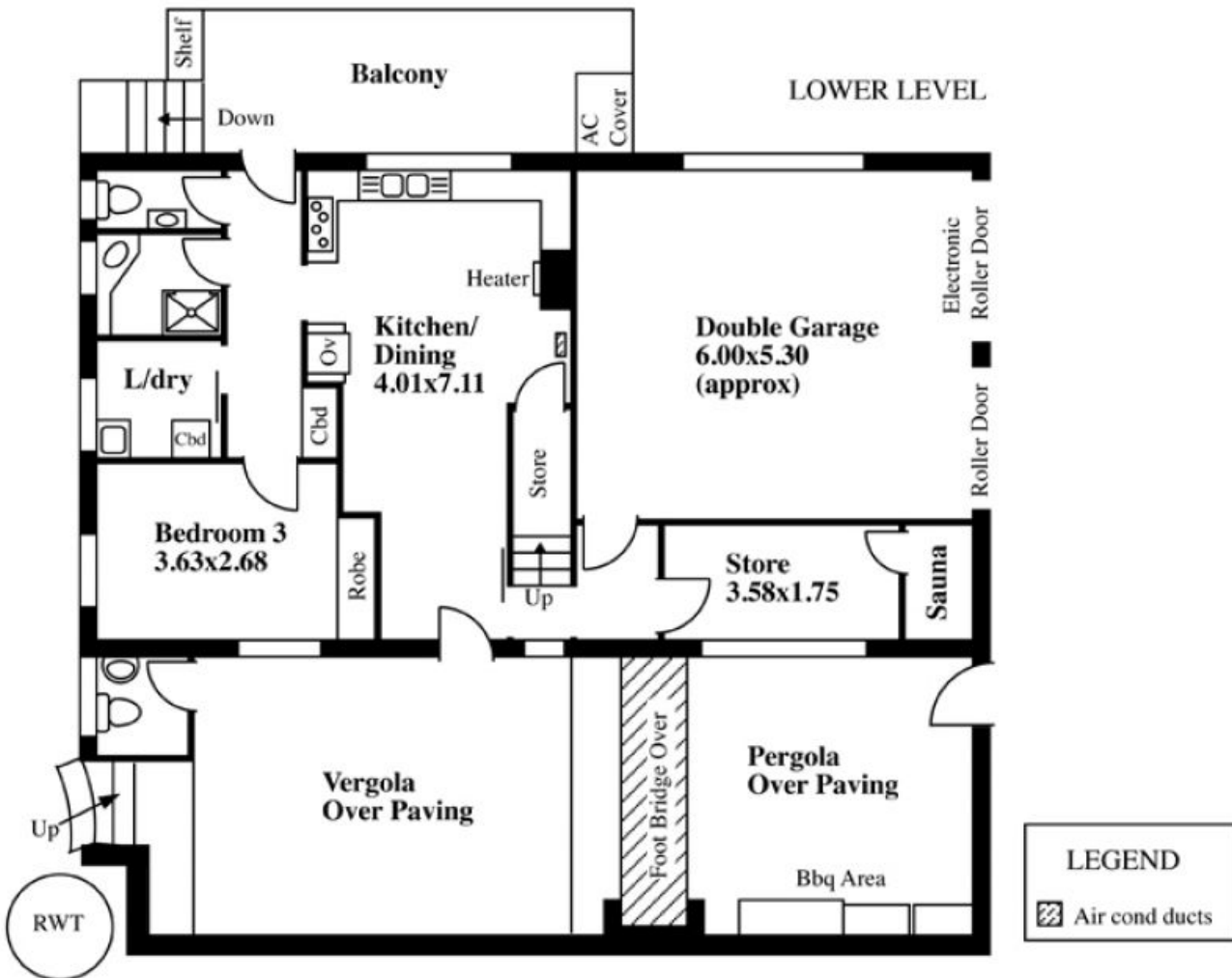
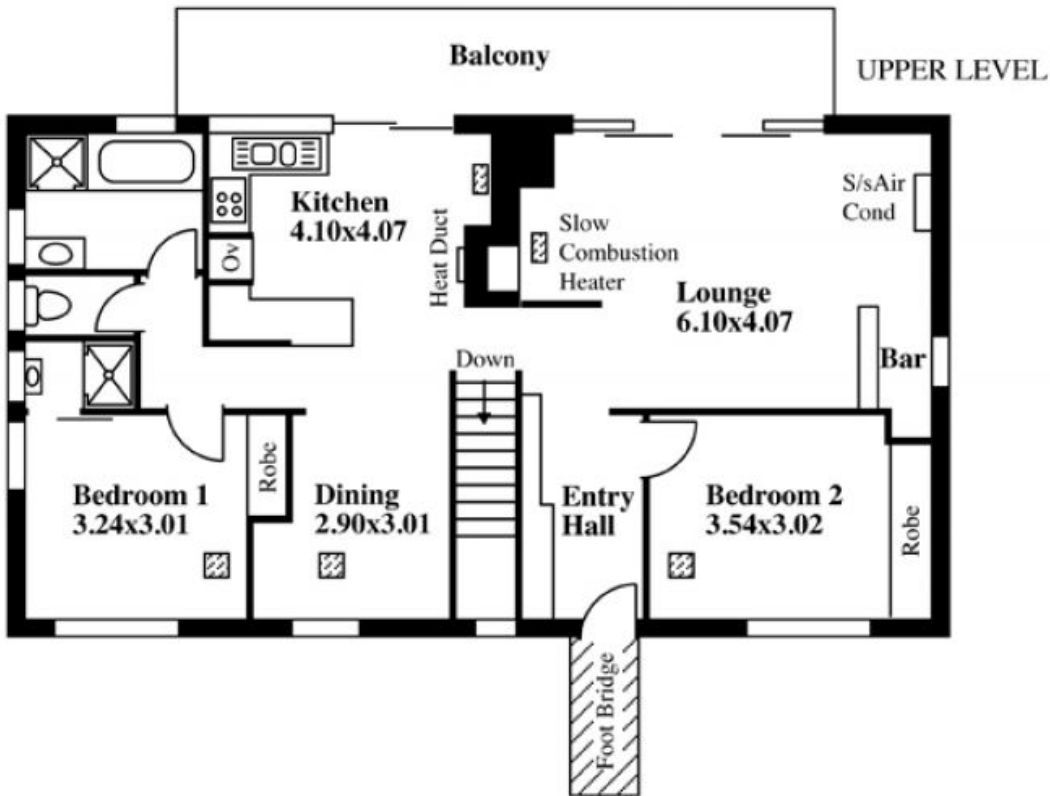
Jane Nelson
08 8277 1777

[For full version visit the website](https://www.magain.com.au)

<https://www.magain.com.au>
Magain Real Estate

765 Marion Road Ascot Park SA
08 8277 1777

8 Malvern Court, Aberfoyle Park



This drawing is for illustration purposes only
(Drawing is not to scale)

The drawing and the information contained is not intended to be part of any contract. All measurements are approximate and details intended to be relied upon should be independently verified.

ESTIMATE OF AREA

LOWER LEVEL 107.22 Square metres/ 11.52 Squares

UPPER LEVEL 104.60 Square metres/ 11.24 Squares

TOTAL 319.04 Square metres/ 22.76 Squares

Desk Top Image (V1013-11)