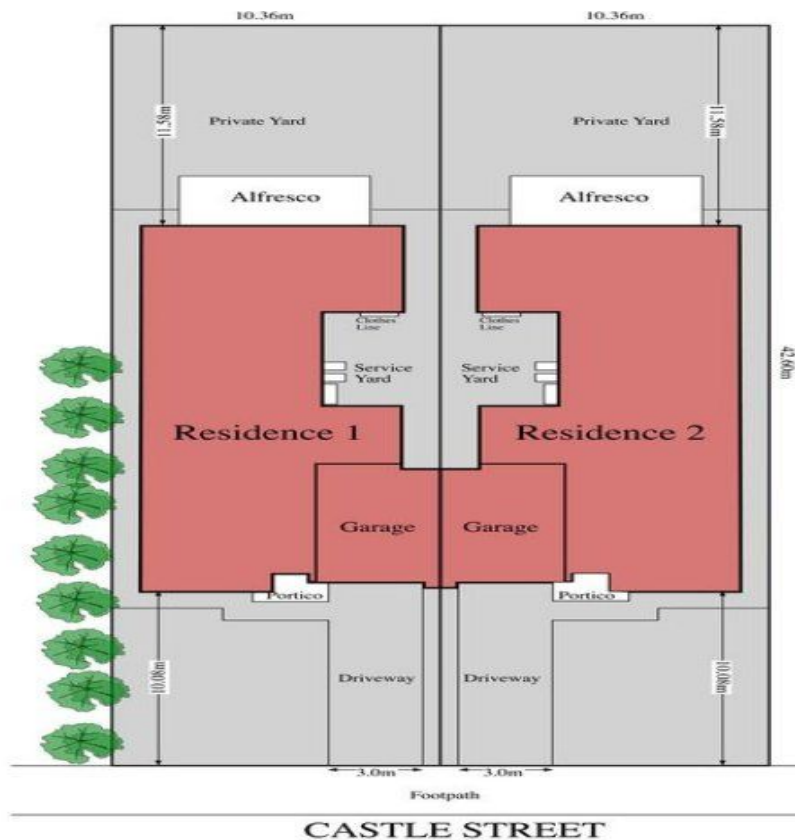
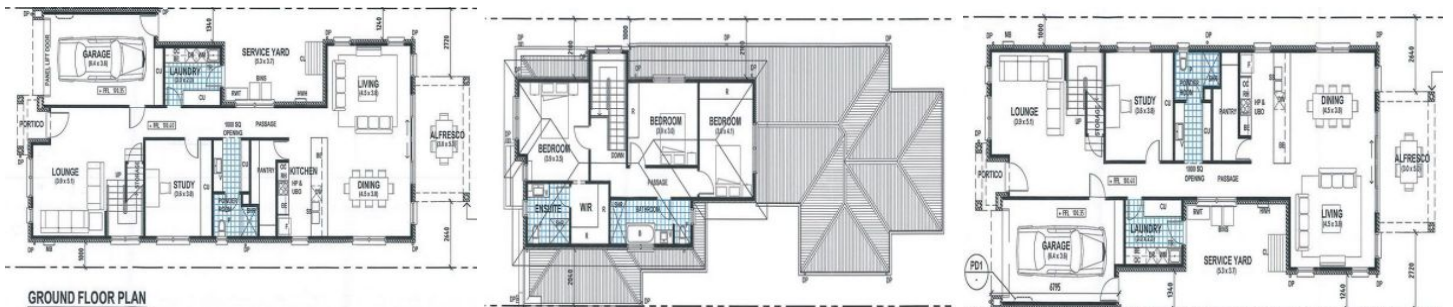


# MAGAIN



CASTLE STREET



## 45A Castle Street EDWARDSTOWN SA

3 3 2

an exciting new release fresh on the market, two torrens title allotments ( one sold ) ready and with plans, land only asking price \$275,000 - \$290,000 each, adjacent to Glandore midway between the city and the sea, with two options as follows.

Option 1 Land Only - choose your own builder, the block has street frontage and offers north facing backyard, a 10.36m frontage, 42.59m deep and an area of 441sqm

Option 2 Home & Land - building plans attached, fabulous architectural design, each home plan is a huge 256sqm, superb layout with three bedrooms, three bathrooms, separate study room and two separate living areas with 2.7m ceilings.

[For full version visit the website](https://www.magain.com.au)

**Type** : House  
**Building Size** : 28 sqm  
**View** : <https://www.magain.com.au/property/45-a-castle-street-edwardstown-sa/8422624>

