

MAGAIN



14-26 South Terrace ADELAIDE SA

1 1 1

Your own little hideaway! Sited on the first floor of this secure building is this compact bedsitter. Just perfect for the single person who wants to enjoy the park lands, walk to the market, transport and to all the fun our wonderful city has to offer.

There's not a lot to it - a living room/bedroom with loads of built ins, kitchen and bathroom. You can enjoy a quiet night on the small balcony and just be yourself here! Laundry plus off street parking at the rear.

Previously rented at \$190 per week, it is now vacant & ready for the astute investor. Price reduced for genuine sale.

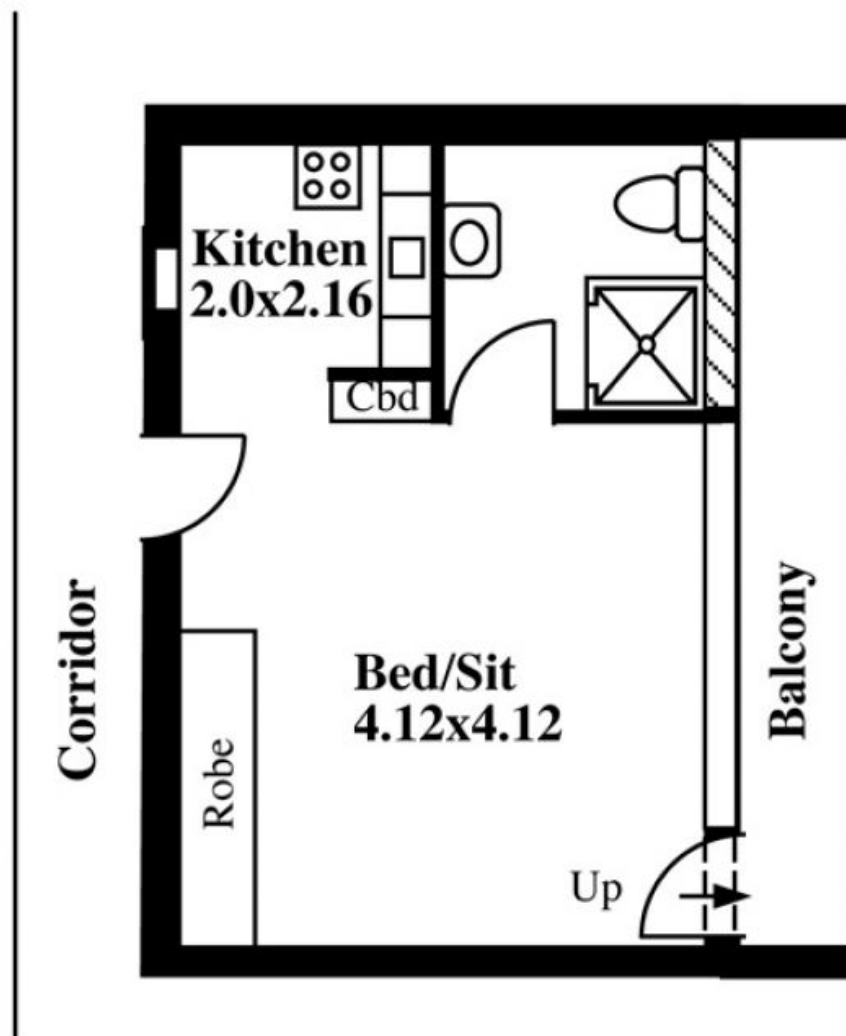
Type : Unit
Building Size : 3 sqm
View : <https://www.magain.com.au/property/14-26-south-terrace-adelaide-sa/8422639>



Jane Nelson
08 8277 1777

14/26 South Terrace, Adelaide

Carpark available at rear



This drawing is for illustration purposes only
(Drawing is not to scale)

The drawing and the information contained is not intended to be part of any contract. All measurements are approximate and details intended to be relied upon should be independently verified.

ESTIMATE OF LIVING AREA
31.72 Square metres/ 9.30 Squares

Desk Top Image - (Y0213-65)