

MAGAIN



14 Argyle Close ABERFOYLE PARK SA

4 🚗 3 🚗 5 🚗

This stunning individually designed solid brick home will impress from the moment you enter this idyllic location amongst other quality homes.

With soaring timber ceilings in the living area and full length picture windows to take in the delightful views, it offers that "WOW" factor along with the feeling of "I could live here!".

The lower level with wide entrance hall comprises a large fourth bedroom/teenager retreat with ensuite, a games room or home office with its own access and a large double garage with auto door and cellar/storage.

Upstairs is the entertainers dream with large open plan areas which include a lounge, a "wet" bar with adjacent champagne sitting area - for the girls of course!, large dine, family room and stunning Tasmanian Oak kitchen with granite bench tops, dishwasher & pantry.

Type : House
Building Size : 34 sqm
View : <https://www.magain.com.au/property/14-argyle-close-aberfoyle-park-sa/8422657>

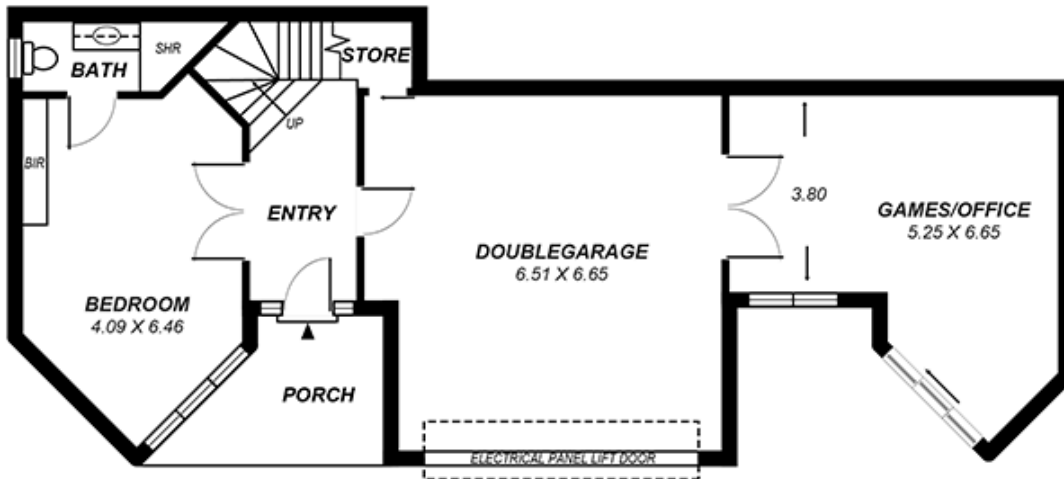


Jane Nelson
08 8277 1777

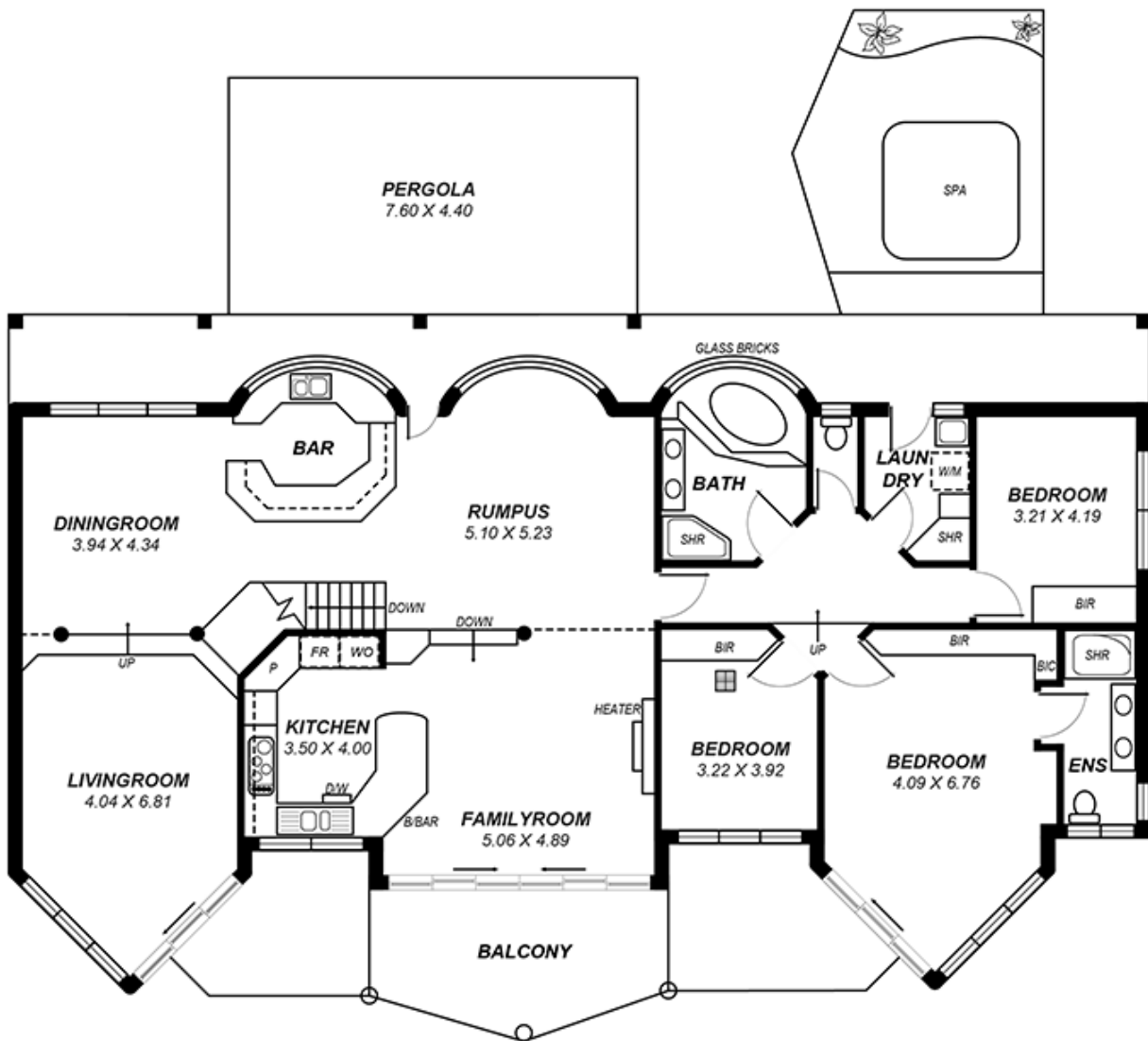
[For full version visit the website](https://www.magain.com.au)

<https://www.magain.com.au>
Magain Real Estate

765 Marion Road Ascot Park SA
08 8277 1777



LOWER LEVEL



UPPER LEVEL

*This drawing is for illustration purposes only .
 All measurements are approximate and details intended
 to be relied upon should be independently verified.*