

# MAGAIN



## 10 Shinnick Street DOVER GARDENS SA

2 1 1

This superbly presented property offers an excellent opportunity to downsize, invest or as a sensible start into the real estate market. Sited in a quiet location within walking distance to the local park, transport and just a few minutes to Westfield Shopping Town.

Boasting high ceilings, quality decor and a real move in and start living situation, it offers two double bedrooms with robes, the front bedroom with roller shutter, stunning modern kitchen with Asco dishwasher and ample storage, large modern bathroom and separate laundry with built ins. The open plan living area with quality tiling, is spacious with plenty of room & natural light along with a split system air conditioner. This area opens out to the private rear gardens with delightful pergola area, as does the master bedroom. The lock up garage with auto roller door also has internal

**Type** : House  
**Building Size** : 11 sqm  
**Land Size** : 277 sqm  
**View** : <https://www.magain.com.au/property/10-shinnick-street-dover-gardens-sa/84227>

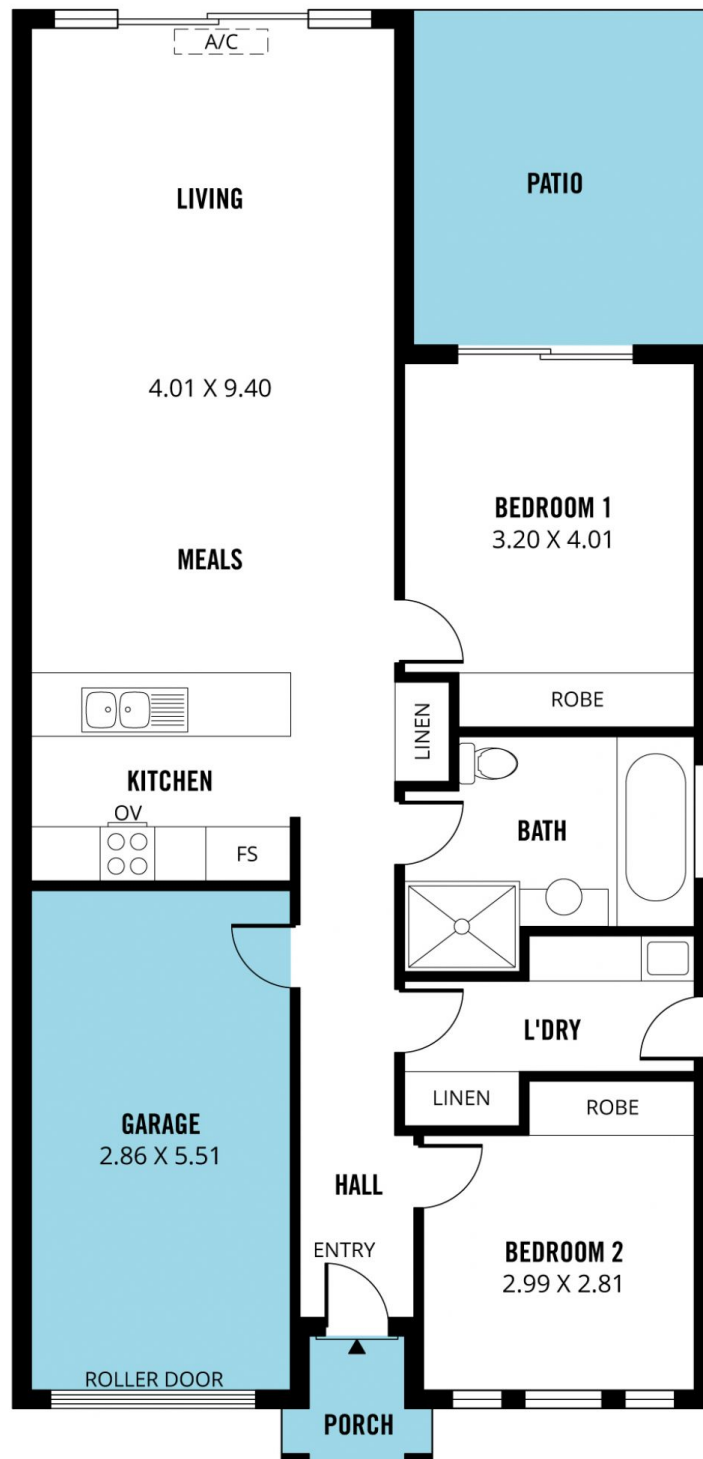


**Jane Nelson**  
08 8277 1777

[For full version visit the website](https://www.magain.com.au)

<https://www.magain.com.au>  
Magain Real Estate

765 Marion Road Ascot Park SA  
08 8277 1777



Scale in metres. This drawing is for illustration purposes only. All measurements are approximate and details intended to be relied upon should be independently verified. Produced by **The Fotobase Group**