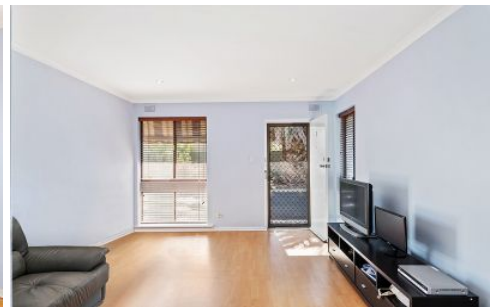


MAGAIN



1/23 Creslin Terrace CAMDEN PARK SA

2 1 1

This solid brick single story front unit with a delightful outlook is situated between Glenelg & the city and within walking distance to Immanuel College and public transport. The spacious lounge with laminated flooring and split system air conditioner leads through to the updated kitchen and dining area.

Both of the large bedrooms have built in robes. The bathroom has washing machine facilities even though there is a community laundry should you choose.

Other features include timber venetians and exterior blinds. Currently let to delightful tenants at \$310 per week until 3rd June 2022.

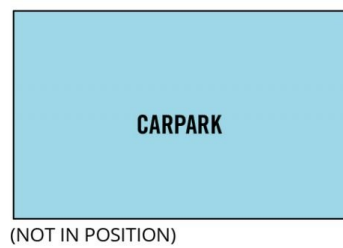
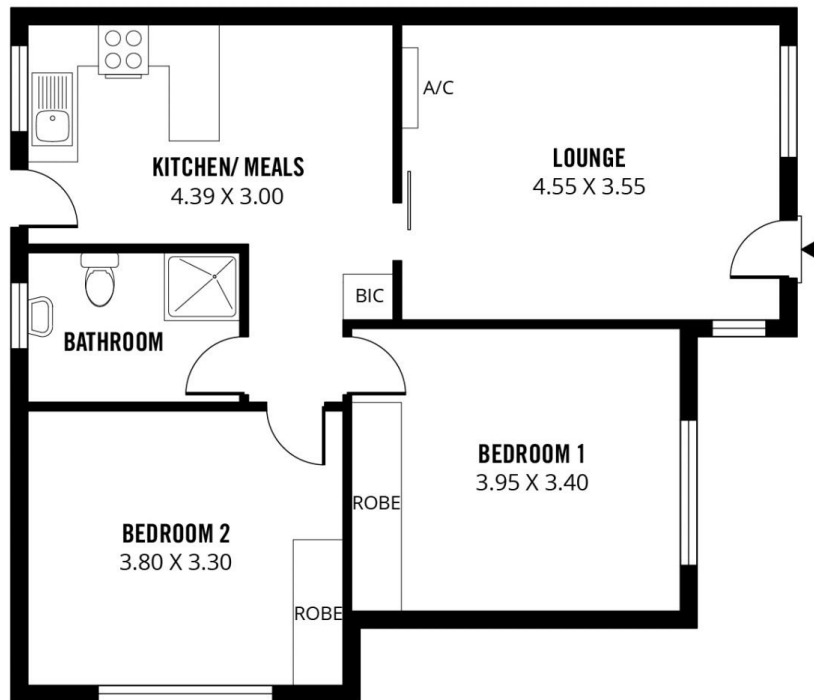
Type : Unit
Price : \$ 288,000
Building Size : 8 sqm
View : <https://www.magain.com.au/property/12-3-creslin-terrace-camden-park-sa/8422730>



Jane Nelson
08 8277 1777

<https://www.magain.com.au>
Magain Real Estate

765 Marion Road Ascot Park SA
08 8277 1777



Scale in metres. This drawing is for illustration purposes only. All measurements are approximate and details intended to be relied upon should be independently verified.

Produced by **The Fotobase Group**