

MAGAIN



2 Bond Street SOMERTON PARK SA

3 2 4

To arrange a private viewing of this property please contact Jane Nelson.

This sensational home has been renovated and extended to exacting specifications.

Sited in an excellent location close to Sacred Heart College on a private landscaped allotment of approximate 690 sqm, it offers an absolute lifestyle for both the family and entertaining.

The huge open plan living area at the rear includes a fantastic kitchen with ample cupboards and the best walk in pantry I have ever seen! The spacious dine area is adjacent to the large family room with bi-fold doors to the under cover portico outdoor kitchen area, private gardens and spa.

There are three double bedrooms with robes, study area

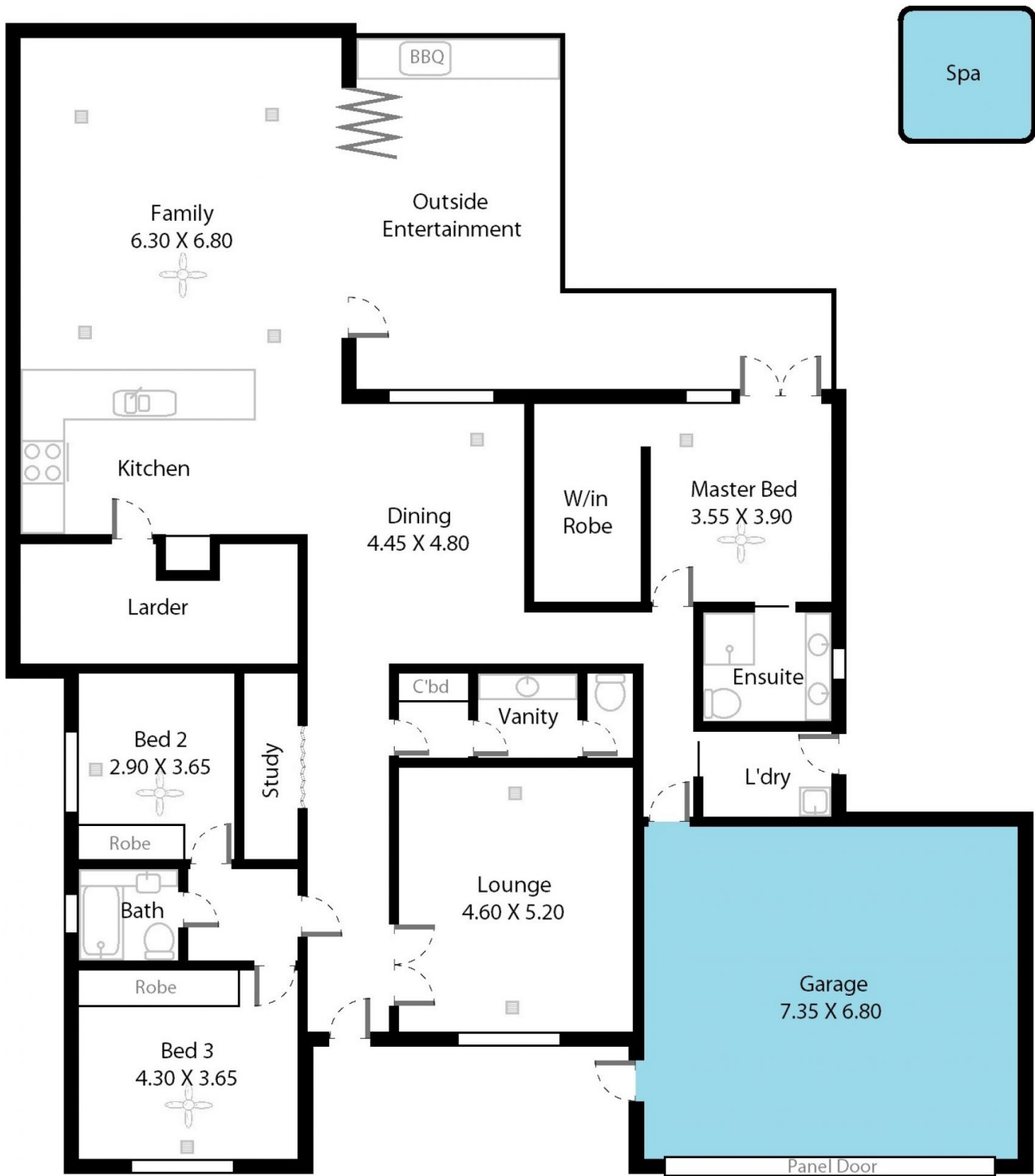
[For full version visit the website](https://www.magain.com.au/property/2-bond-street-somerton-park-sa/8422748)

Type : House
Building Size : 25 sqm
Land Size : 696 sqm
View : <https://www.magain.com.au/property/2-bond-street-somerton-park-sa/8422748>



Jane Nelson
08 8277 1777

2 Bond Street Somerton Park, South Australia.



Picture intended as a reference only. Any specific measurements required should be obtained by an independent surveyor.