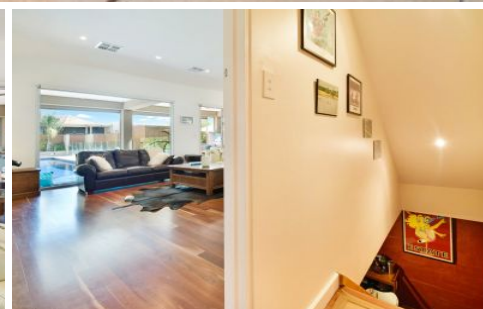
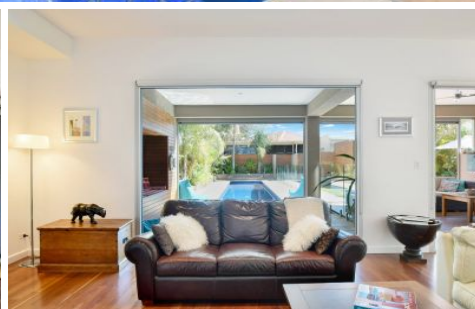


MAGAIN



12 Scarborough Street SOMERTON PARK SA

6 🚗 3 🚗 2 🚗

A sensational Circa 1925 Bungalow which blends the past with the present. The attention to detail is prevalent throughout this magnificent property which is sited on 746 sqm allotment with all the "I wants". Offering over 300 sqm of luxury family living, it is an absolute must see to appreciate the design, quality and attention to detail both inside and out.

Private brush fencing and remote gate access ensure your security and lead into a gorgeous front garden that blends beautifully with the Bungalow feel.

Step inside to the Baltic Pine flooring and high ceilings which welcome you on the lower level to four large bedrooms with built in robes and a stunning fully tiled main bathroom, separate WC with basin and great laundry with ample built ins.

[For full version visit the website](https://www.magain.com.au/property/12-scarborough-street-somerton-park-sa/8422755)

Type : House
Building Size : 33 sqm
Land Size : 746 sqm
View : <https://www.magain.com.au/property/12-scarborough-street-somerton-park-sa/8422755>



Jane Nelson
08 8277 1777

