

MAGAIN



6/25 Norman Street ADELAIDE SA

2 1 2

You won't believe you are in the city when you enter off quiet Norman street and access the property via a secluded tree lined path. This solid brick, large townhouse is just waiting for a modern makeover and will not disappoint anybody looking for a home that they can put their own stamp on.

Type : Townhouse
Building Size : 189 sqm
Land Size : 149 sqm
View : <https://www.magain.com.au/property/625-norman-street-adelaide-sa/8422991>

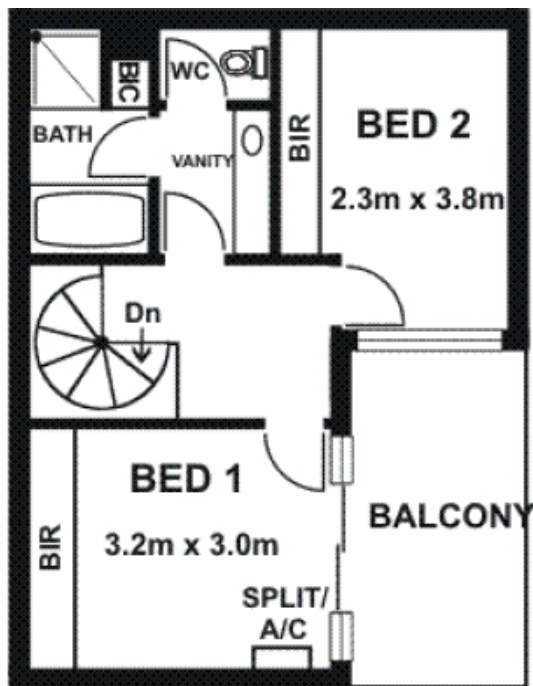
With stand out features including a huge private rear courtyard, 2 off street car parks and 2 large living areas this is not your average CBD offering. Located only a 5 minute walk to Gouger Street and the Central Markets this is position A for a great city lifestyle!

The Why To Buy :-)

[For full version visit the website](#)

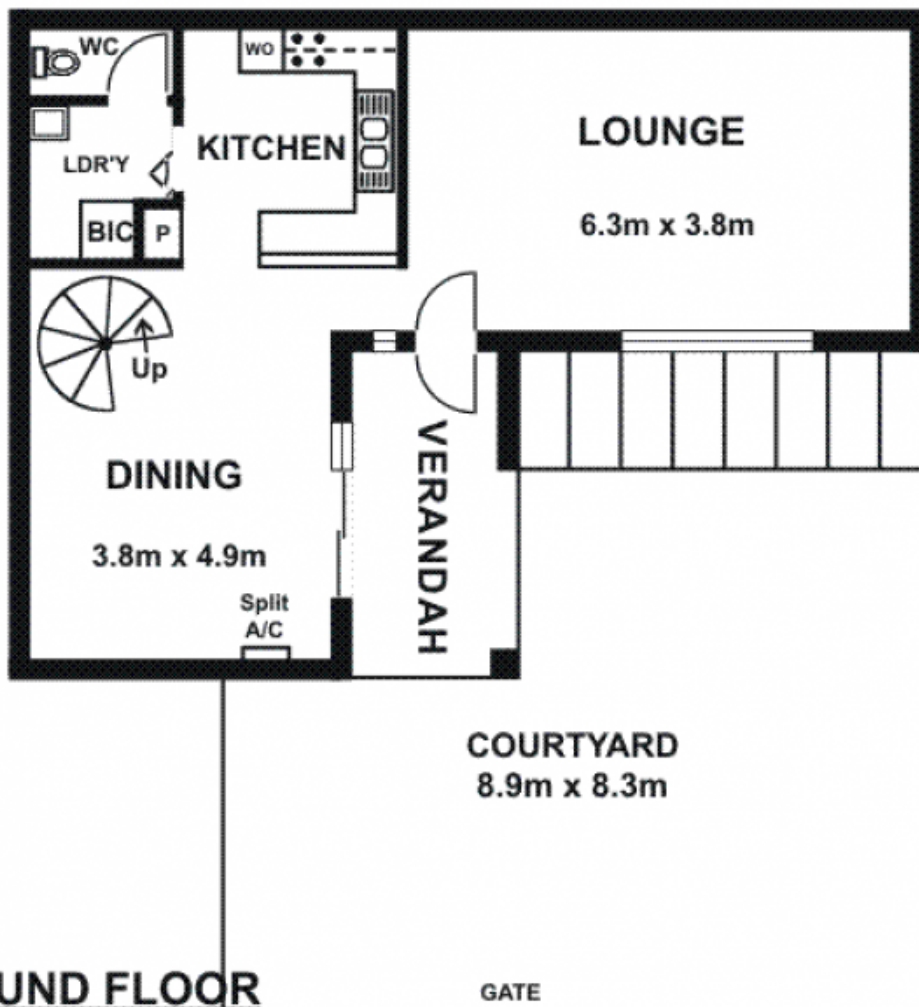
<https://www.magain.com.au>
Magain Real Estate

765 Marion Road Ascot Park SA
08 8277 1777



Ground Floor		67.31sqm
Upper Floor		46.28sqm
Verandah		8.71sqm
Balcony		8.71sqm
Courtyard		58.34sqm
Total	Approx.	189.35sqm

UPPER FLOOR



GROUND FLOOR

Please Note: Every care has been taken to verify the correctness of the areas and details used in this leaflet. No warranty or representation is given or made as to the correctness of the information supplied and neither the owners, illustrator nor the Agent accept responsibility for errors or omissions. The sketch is for illustration purposes only and intending purchasers should satisfy themselves independently regarding sizes, layout and location of the property. Please check with local council that all structures are approved by council.