

MAGAIN



202/211 Grenfell Street ADELAIDE SA

2 **1** **2**

Inspections available at all times. Please contact the agent to arrange a time

Immerse yourself in City Living with this wonderful north facing apartment located a very short walk from Rundle Mall and all that the Fringe Festival has to offer!

Overlooking the historic East End Precinct, here you will enjoy the luxuries of an Indoor Swimming Pool and Gym Facility within the building and a safe and secure environment for you and all your guests.

Type : Apartment

View : <https://www.magain.com.au/property/202211-grenfell-street-adelaide-sa/8422997>

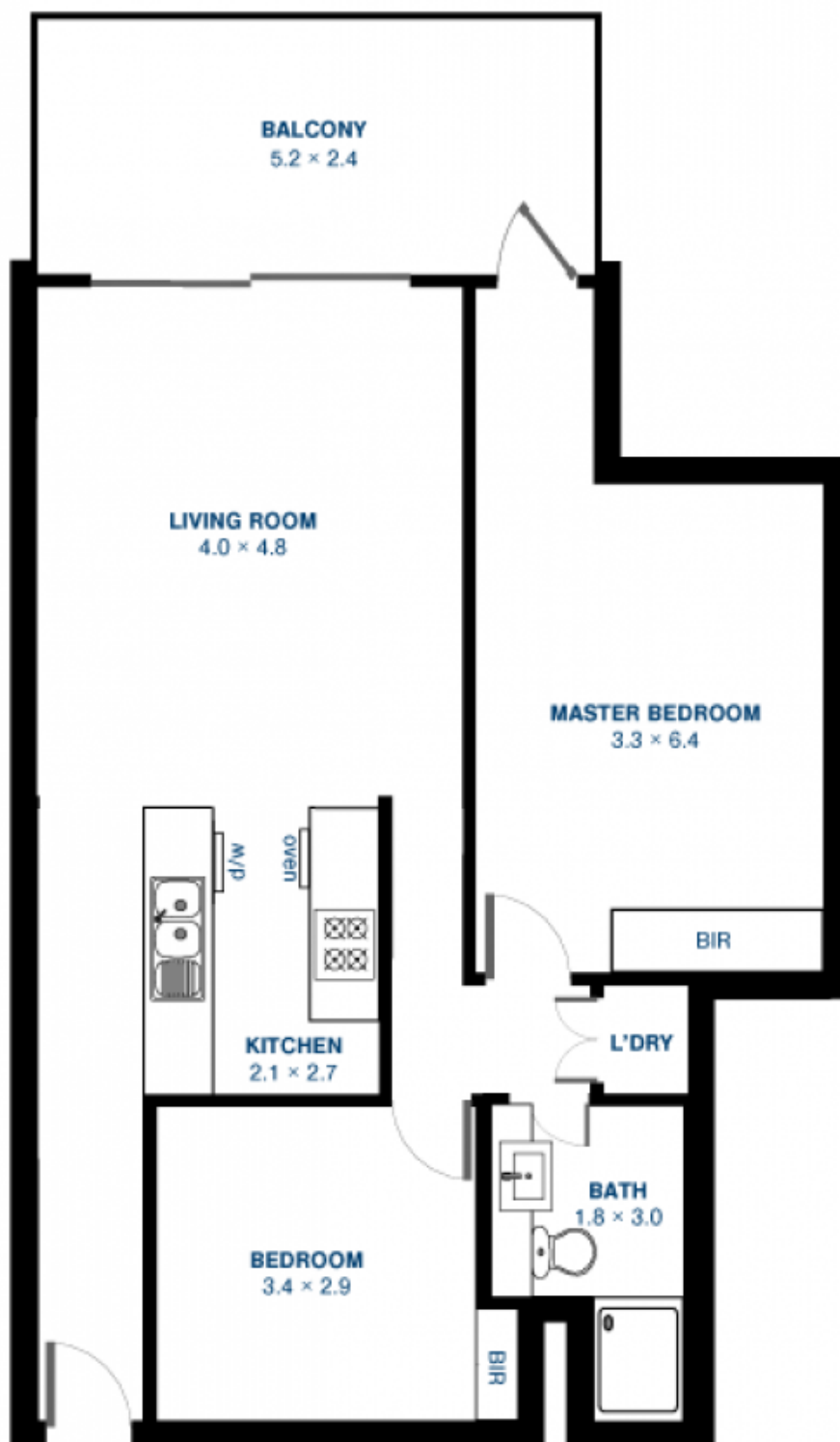
- Overlooks the Historic East End Precinct
- Large North Facing Balcony providing ample natural light
- Great kitchen bench for all your entertaining needs

[For full version visit the website](https://www.magain.com.au)

<https://www.magain.com.au>
Magain Real Estate

765 Marion Road Ascot Park SA
08 8277 1777

202/211 Grenfell St Adelaide 5000



Floor plan measurements are approximate and are for illustrative purposes only.