




MAGAIN



7/246 Grenfell Street ADELAIDE SA

3  2  2 

PRELIMINARY NOTICE OF AUCTION - EARLY IN THE NEW YEAR.

3 Bedroom 3 level Townhouse with double garage.

Intercom security entry to street gate and private footpath.

Hardwired fire alarms throughout.

Ground floor consists of fully tiled entry, lobby and bedroom 3

Bedroom 3 has ensuite, built in robes and french doors to courtyard.

First floor is a large open plan living dining room, tiled throughout, 3.1m ceilings, french doors to large entertaining terrace.

Open plan kitchen with island bench. Laundry.

Second floor consists of the master bedroom and bedroom

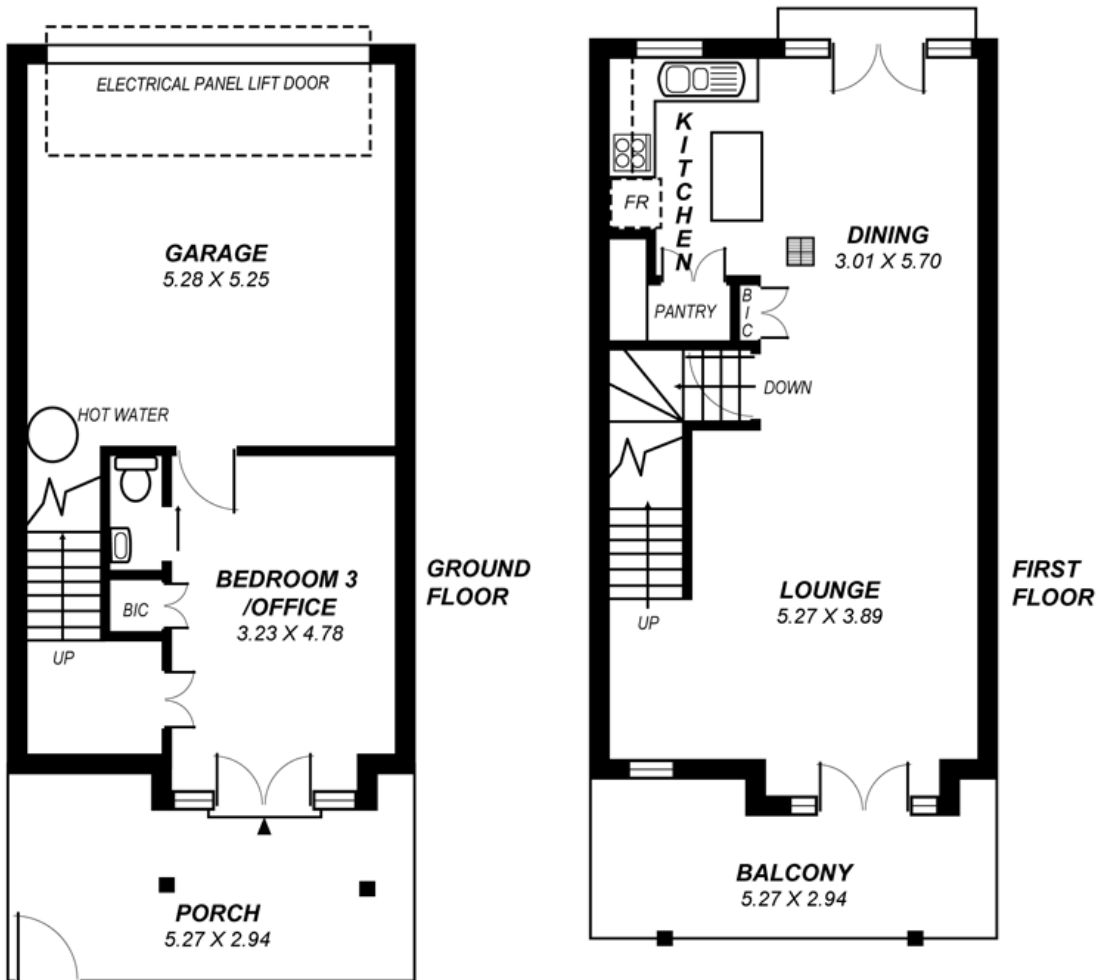
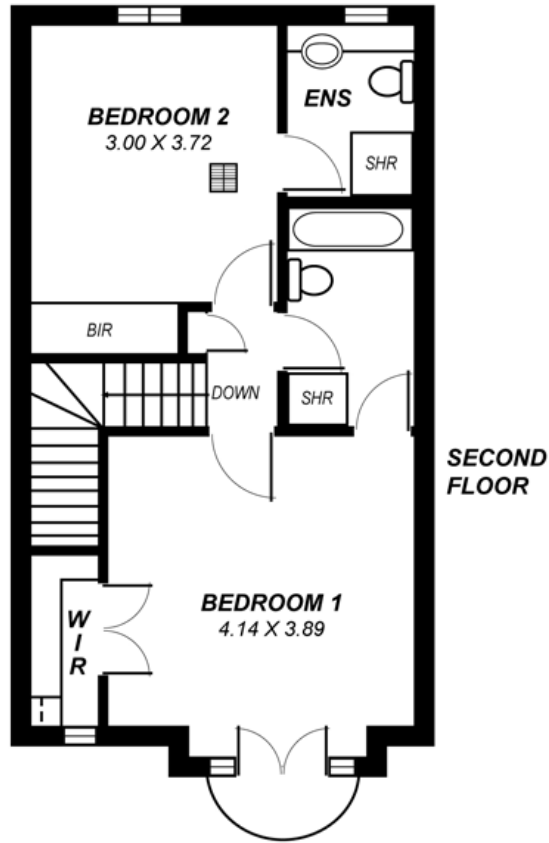
Type : Townhouse

View : <https://www.magain.com.au/property/7246-grenfell-street-adelaide-sa/8423001>

[For full version visit the website](https://www.magain.com.au)

<https://www.magain.com.au>
Magain Real Estate

765 Marion Road Ascot Park SA
08 8277 1777



*This drawing is for illustration purposes only .
All measurements are approximate and details intended
to be relied upon should be independently verified.*