

MAGAIN



12/9 Ebenezer Place ADELAIDE SA

2  1  1 

Located in Adelaide's fashionable East End.

- 82sqm
- 2 double bedrooms (main with built in robes)
- Currently securely leased on long term basis for \$465/week until 24/04/12
- Fantastic rental yield of nearly 6%
- A minutes walk to Rundle Street, Botanic Gardens, East Parklands, Adelaide University and Royal Adelaide Hospital.
- Strata :\$784/Qtr
- Council rates : \$1,022/annum
- Water : \$185/qtr

Type : Apartment

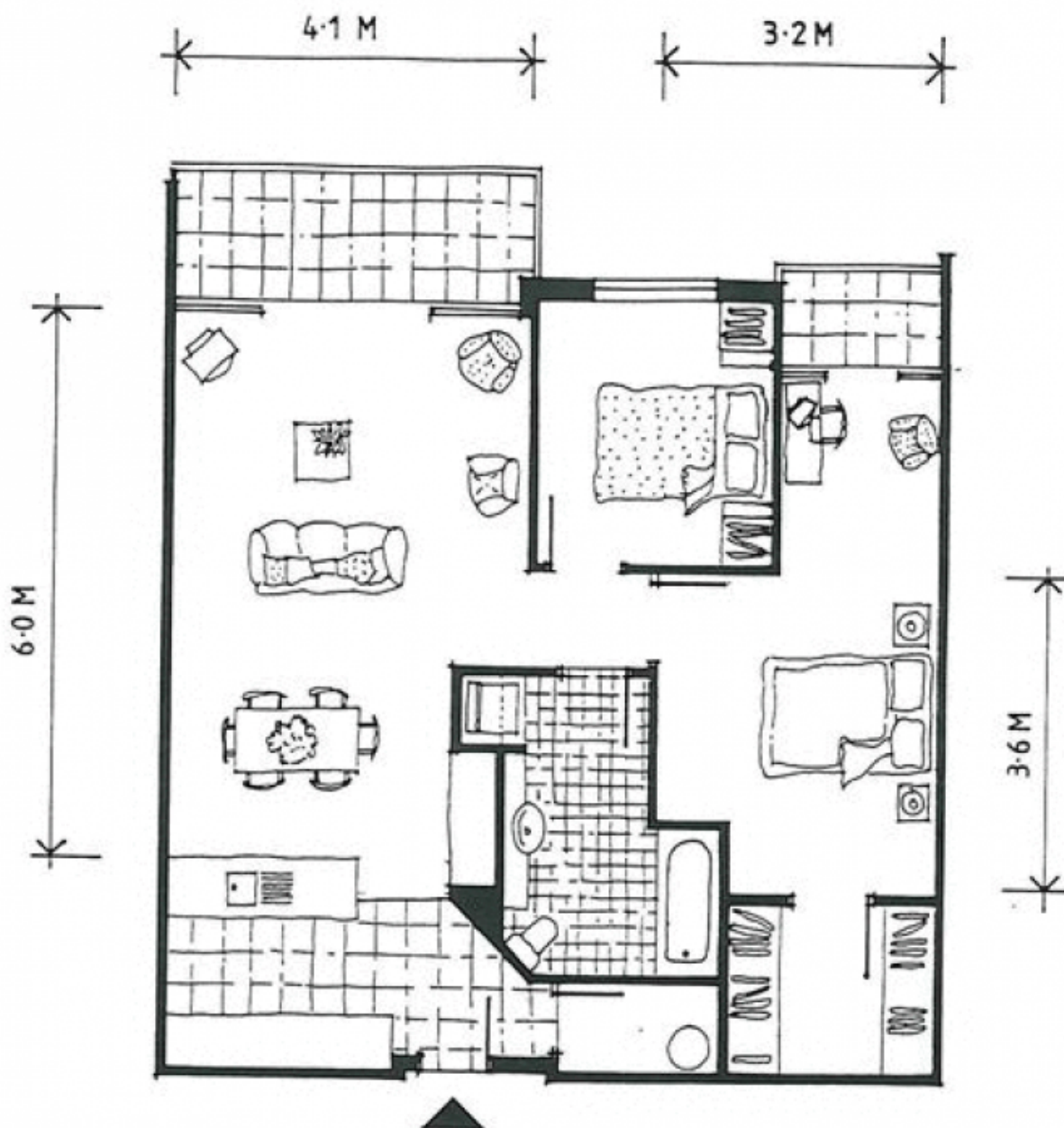
View : <https://www.magain.com.au/property/129-ebenezer-place-adelaide-sa/8423003>

For a private inspection, please contact Kent Davis on 0417778858 or kent@cityrealty.com.au

[For full version visit the website](#)

<https://www.magain.com.au>
Magain Real Estate

765 Marion Road Ascot Park SA
08 8277 1777



Apartment 12



A LIBERMAN GROUP DEVELOPMENT

Due care has been taken to ensure that the information presented is accurate. Purchasers should, however, be aware that any plans and/or specifications are subject to various approvals and the requirements of construction and that some amendments may be required.