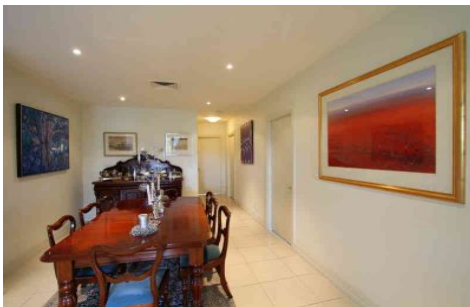


MAGAIN



22/38 East Terrace ADELAIDE SA

3 2

This property is located in the highly sought after "Maxwell" building in the heart of Adelaide's East End.

This property enjoys

- unobstructed sweeping views out over the evergreen, expansive and beautiful East Parklands, including Rymill Park. It is a spectacular location to enjoy a stroll, and feel comfortable that due to its location, you will always have a natural aspect to appreciate.

- Dress Circle position, in "Maxwell" building which has only 16 Luxury Apartments
- 4 double bedrooms
- Quality appointments throughout.
- Open Plan Living

Type : Apartment

View : <https://www.magain.com.au/property/2238-east-terrace-adelaide-sa/8423005>

[For full version visit the website](https://www.magain.com.au/property/2238-east-terrace-adelaide-sa/8423005)

<https://www.magain.com.au>
Magain Real Estate

765 Marion Road Ascot Park SA
08 8277 1777



APARTMENT 2.2



PART OF THE PRESTIGIOUS GARDEN EAST PROJECT
A LIBERMAN GROUP DEVELOPMENT

WOODS BAGOT
ARCHITECTS
INTERIORS
LANDSCAPE

