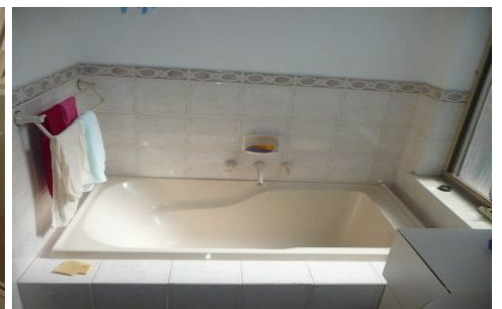





MAGAIN



24/42 Charlick Circuit ADELAIDE SA

1  1  1 

Boutique city living: This spacious 1 bedroom apartment is centrally located in one of Adelaide CBD's most desirable locations, the East End.

This apartment is positioned with a North Eastern facing aspect and a good sized balcony to take advantage of the morning sunlight.

The apartment comprises of a large double bedroom with built in robes, full size bathroom with separate bath and shower and internal laundry facilities, additional second toilet, spacious open-plan lounge and dining, thermostatically controlled air conditioning throughout, generous size kitchen with granite bench tops and dishwasher.

[For full version visit the website](https://www.magain.com.au/property/24-42-charlick-circuit-adelaide-sa/8423016)

Type : Apartment
Building Size : 79 sqm
View : <https://www.magain.com.au/property/24-42-charlick-circuit-adelaide-sa/8423016>

HIBISCUS

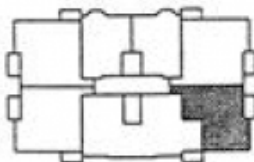


FEATURES

- 1 Double bedroom
- 1 Bathroom plus 2nd WC
- Built in robes
- Open plan kitchen
- Granite benchtop
- Balcony
- Security entry
- TV, Telecom, Intercom systems
- Thermostatically controlled air conditioning

Area 79 sq. metres

1st, 2nd, 3rd
and 4th floor



BROOKER BUILDING
GARDEN EAST PROJECT
LIBERMAN GROUP

