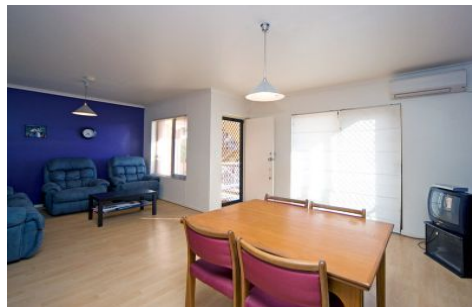
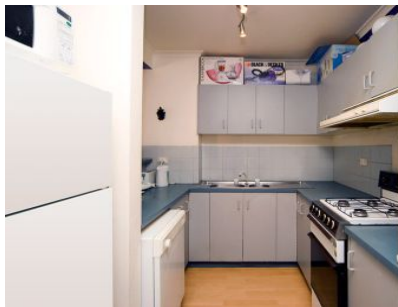


# MAGAIN



5/23 Winifred ADELAIDE SA

2  1  1 

This well appointed apartment , nestled between the parklands and the Central market offers,

- 2 large bedrooms, both with b.i.r's
- Huge open plan lounge and dining,
- Floating floorboards throughout
- Neat kitchen with gas cooking and dishwasher
- Reverse cycle air conditioning
- Private balcony with city views
- 1 undercover car park,

This conveniently located apartment will appeal to the first home buyers, close to the great restaurants of Gouger Street as well as the iconic Central Markets, public transport and shops.

Contact Andrew Downing 0404882311

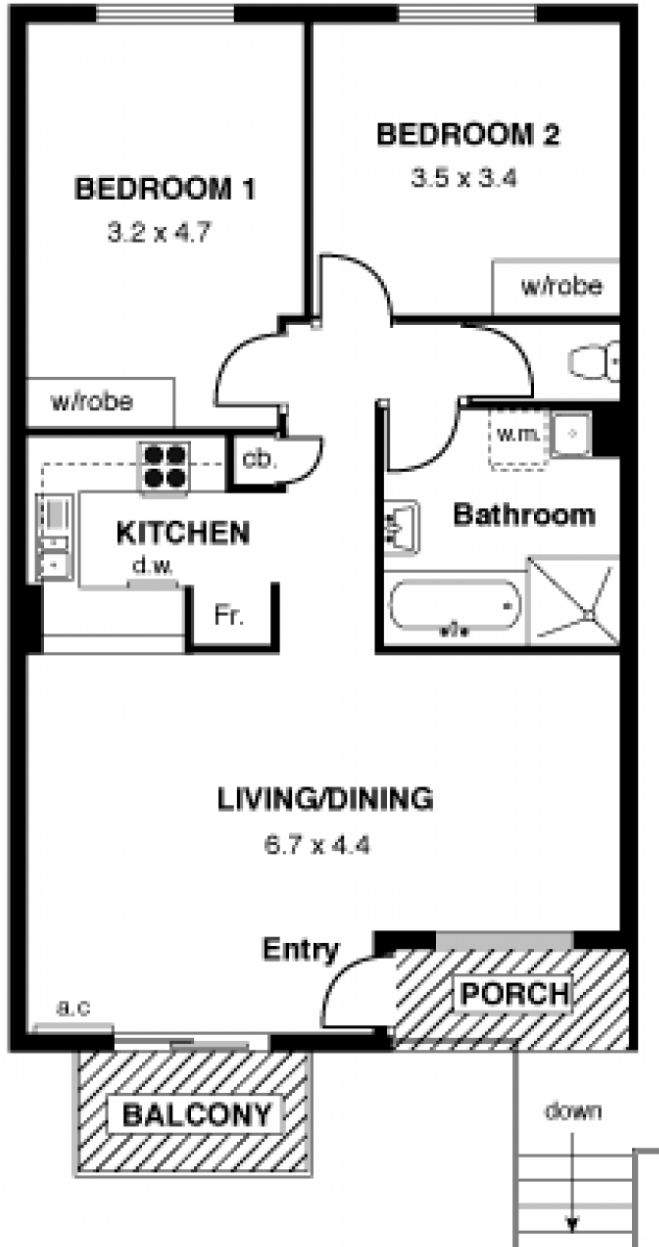
**Type** : Apartment  
**Building Size** : 85 sqm  
**View** : <https://www.magain.com.au/property/52-3-winfred-adelaide-sa/8423027>

5/23 Winifred Street, Adelaide

APPROXIMATE ESTIMATED AREA

Living	83.9
Porch	3.2
Balcony	3.6

TOTAL 90.7 sqm. app.



Every care has been taken to verify the correctness of areas and details used in this leaflet. However no warranty or representative is given or made as to the correctness of information supplied, and neither the owners nor the agent can accept responsibility for errors or omissions.

Imaging House Advertising, 168 Halifax Street, Adelaide 5000