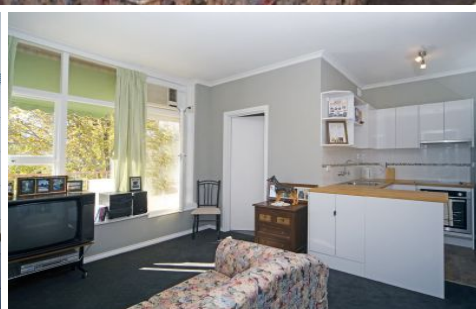
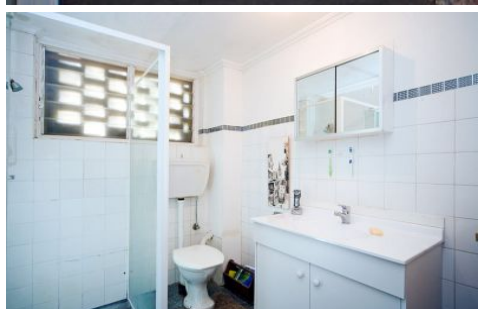


MAGAIN



67/19 South Terrace ADELAIDE SA

1 1 1

GREAT CITY PAD OR INVESTMENT PROPOSITION

This Conveniently located unit has

1 Large bedroom

Stunning new kitchen with quality appliances

Freshly painted with classic neutral colours

New carpets throughout

Fully furnished (option)

Reverse cycle air conditioning

Private balcony with great City views

1 carpark

Lovely parklands setting close to all the city has to offer.

Be quick as units in this popular complex dont last long.

Type : Unit

Building Size : 44 sqm

View : <https://www.magain.com.au/property/67-19-south-terrace-adelaide-sa/8423033>

Andrew Downing 0404882311

67/19 South Terrace, Adelaide

ESTIMATED AREAS

| | |
|---------|-----------------|
| Living | 40.4 sq. metres |
| Balcony | 4.1 sq. metres |

| | |
|-------|-----------------|
| Total | 44.5 sq. metres |
|-------|-----------------|

