

# MAGAIN



602/211 Grenfell Street ADELAIDE SA

2  2  2 

CHIC CITY RESIDENCE, TOP FLOOR, TOP VIEWS!!!

This stunning sub penthouse apartment with panoramic views will excite buyers with:

- 2 Large bedrooms both with balcony access & B.I.R,
- Master has full ensuite,
- Separate study,
- Fabulous kitchen with ceaserstone bench tops, Meile appliances,
- Video intercom and ducted reverse cycle air conditioning,
- Climate controlled secure wine storage facility,
- Huge balcony with spectacular outlook,
- 2 valuable carparks with large storage area

This high spec apartment, loaded up with many extras, is perfectly positioned to take advantage of our beautiful City; a 2 minute walk to the parklands and equally close to

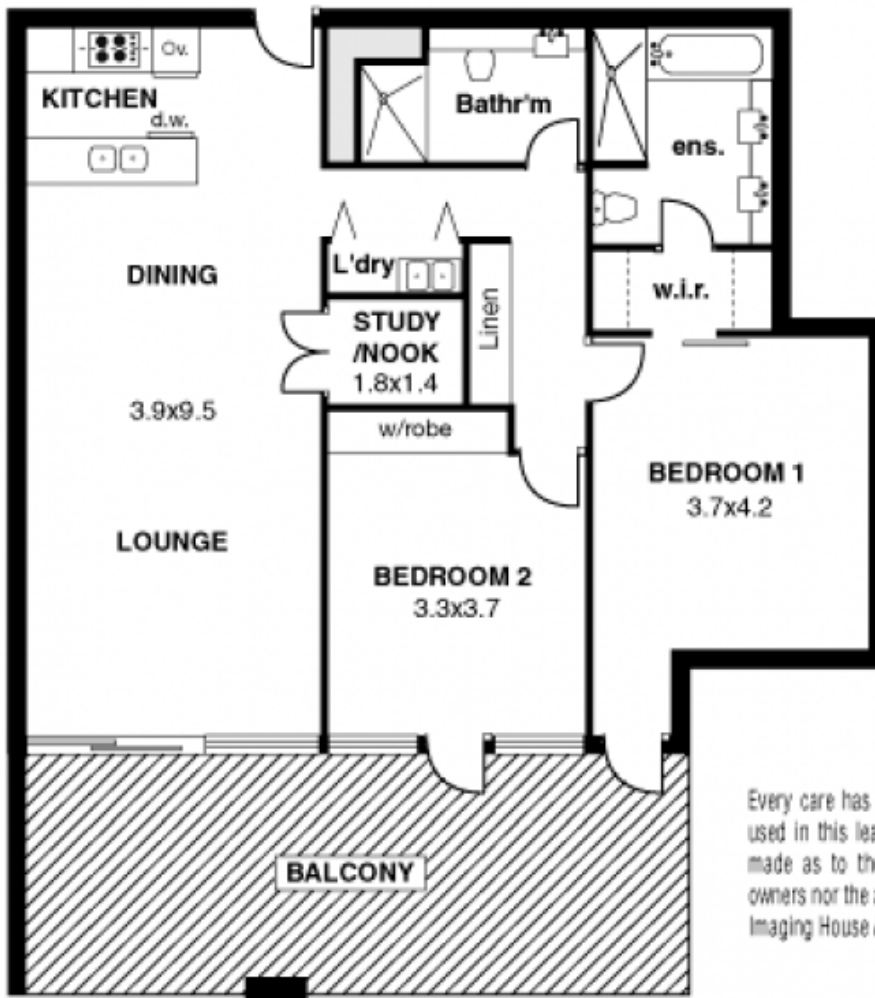
**Type** : Apartment  
**Building Size** : 139 sqm  
**View** : <https://www.magain.com.au/property/602211-grenfell-street-adelaide-sa/8423051>

[For full version visit the website](https://www.magain.com.au)

<https://www.magain.com.au>  
Magain Real Estate

765 Marion Road Ascot Park SA  
08 8277 1777

Apt 602  
The Domain  
211 Grenfell St,  
Adelaide



APPROXIMATE ESTIMATED AREA	
Living	109.5 sq. metres.
Balcony	29.8 sq. metres.
<b>TOTAL</b>	<b>139.3 sq. metres.</b>

Every care has been taken to verify the correctness of areas and details used in this leaflet. However no warranty or representative is given or made as to the correctness of information supplied, and neither the owners nor the agent can accept responsibility for errors or omissions.  
Imaging House Advertising, 168 Halifax Street, Adelaide 5000