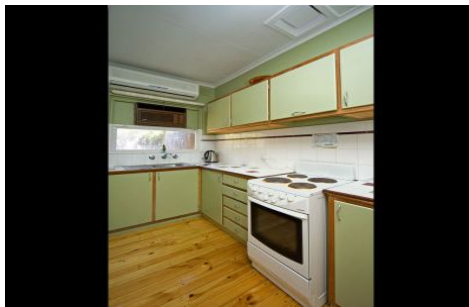


MAGAIN



7/45 Wattle Street FULLARTON SA

2 1 1

This lovely unit is located at the back of this small, tightly held group and has

- 2 Bedrooms
- Main bedroom is spacious with bir
- Large separate lounge with polished floorboards
- Split system in kitchen/meals area
- Separate laundry
- Huge private courtyard with garden shed
- Undercover car park

Properties in this location don't come onto the market often so be quick.

Perfect for 1st home buyers, investors and retirees looking to down size.

Currently tenanted until 12/5/09 at \$250 per week but tenants might consider moving earlier if new owner wants

Type : Unit
Building Size : 68 sqm
View : <https://www.magain.com.au/property/745-wattle-street-fullarton-sa/8423061>

[For full version visit the website](https://www.magain.com.au)

<https://www.magain.com.au>
Magain Real Estate

765 Marion Road Ascot Park SA
08 8277 1777

Unit 7/45 Wattle Street, Fullarton.

APPROXIMATE ESTIMATED AREA

Living	59.6
Porch	2.2
<hr/>	
TOTAL	61.8 sqm. app.

