

# MAGAIN



16/422 pulteney ADELAIDE SA

3  1  1 

TRENDY 3 BEDROOM APARTMENT IN GREAT SOUTH - EAST LOCATION !!!

This chic apartment in the popular Chelsea complex has been fully upgraded and features

- 3 good size bedrooms
- Bedrooms 1 & 2 have b.i.r & ceiling fans
- Large open plan dining/ lounge with polished concrete flooring
- Stunning bathroom with eye catching glass block feature
- UV and heat protected film on windows
- Separate toilet and r/c airconditioning
- Huge balcony with hill views
- 1 Secure carpark

**Type** : Apartment

**Building Size** : 97 sqm

**View** : <https://www.magain.com.au/property/16422-pulteney-adelaide-sa/8423099>

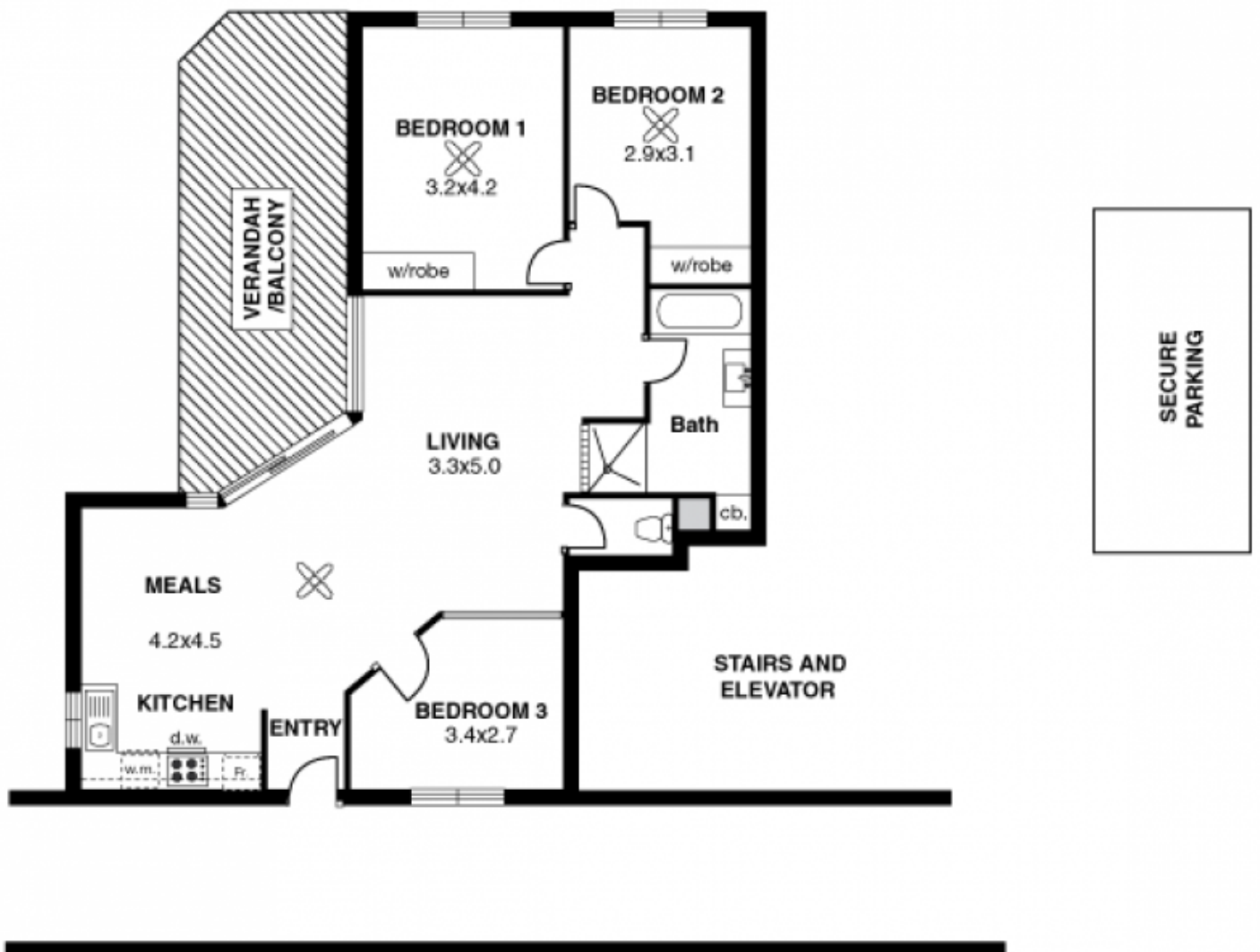
This stunning apartment will appeal to owner occupiers as

[For full version visit the website](#)

<https://www.magain.com.au>  
Magain Real Estate

765 Marion Road Ascot Park SA  
08 8277 1777

Apartment 16 422 Pulteney Street, Adelaide



Every care has been taken to verify the correctness of areas and details used in this leaflet. However no warranty or representative is given or made as to the correctness of information supplied, and neither the owners nor the agent can accept responsibility for errors or omissions.  
 Imaging House Advertising, 168 Halifax Street, Adelaide 5000

APPROXIMATE ESTIMATED AREA	
Living	97.1 sq. metres.
Verandah	20.9 sq. metres.
<b>TOTAL</b>	<b>118.0sq. metres.</b>