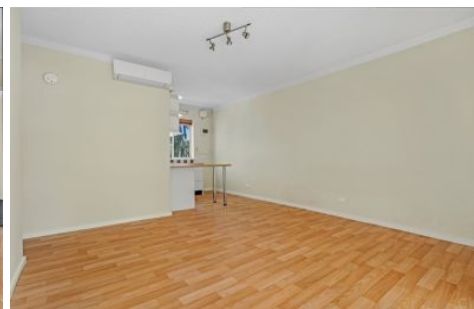


# MAGAIN



**12/15 Wakefield Street KENT TOWN SA**

2  1  1 

Take advantage of this spacious unit perfectly positioned within walking distance to Norwood Parade, the East End, and the Central CBD Shopping Precinct!

With the beautiful parklands at your doorstep, why not take a walk to the caf/restaurant for a Sunday brunch, browse the many selections of famous fashion houses, do your shopping at Rundle Mall or catch a movie at Palace Nova Cinema in the evening?

An ideal purchase for both working professionals or mature couples who want to be close to the city lifestyle without breaking the bank! Alternatively, this unit will appeal to savvy investors as a superb investment to tap into the city rental market with good returns.

[For full version visit the website](https://www.magain.com.au/property/12-15-wakefield-street-kent-town-sa/8423107)

**Type** : Block of Units  
**Price** : \$ 290,000  
**Building Size** : 55 sqm  
**View** : <https://www.magain.com.au/property/12-15-wakefield-street-kent-town-sa/8423107>



53m<sup>2</sup>

**TOTAL**



53m<sup>2</sup>

Living

Scale in metres. This drawing is for illustration purposes only. All measurements are approximate and details intended to be relied upon should be independently verified.

Produced by **The Fotobase Group**