

MAGAIN



402/88 Frome Street ADELAIDE SA

2 2 1

True 'Dual Key' properties are difficult to find and this property is a leading example of smart design providing great opportunity for a savvy property owner. If you are looking for a large apartment to live in, an investment or perhaps even both at the same time, all within the one property, then this is the perfect place for you!

Conveniently located close to the East End of Adelaide, this two bedroom apartment comes fully furnished with tasteful decor and is ready to go as an immediate investment or your own home away from home.

Property features:

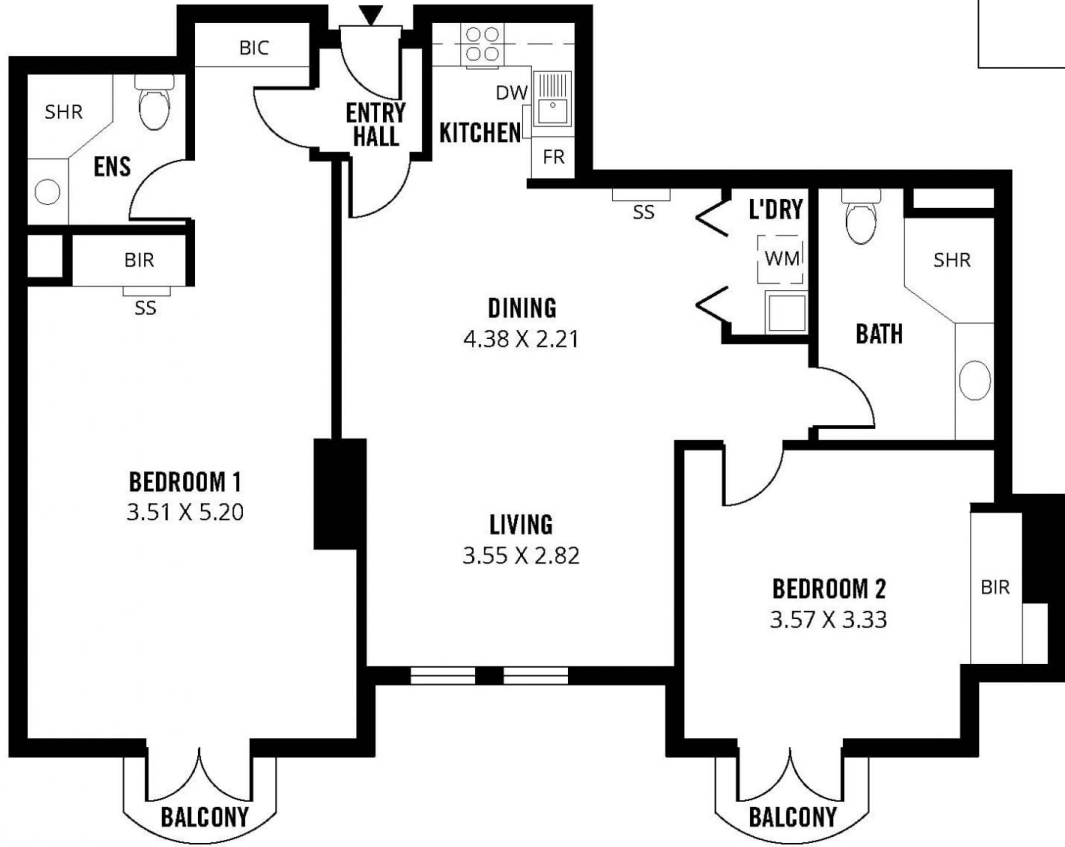
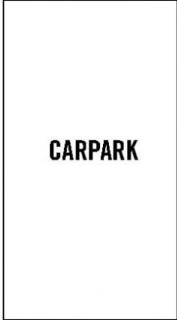
* Ability to keep as both an investment and private city pad

[For full version visit the website](https://www.magain.com.au/property/40288-frome-street-adelaide-sa/8423109)

Type : Apartment
Price : \$ 410,000
Building Size : 88 sqm
Land Size : 92 sqm
View : <https://www.magain.com.au/property/40288-frome-street-adelaide-sa/8423109>

<https://www.magain.com.au>
Magain Real Estate

765 Marion Road Ascot Park SA
08 8277 1777



92m²

TOTAL

88m²

Living

4m²

Balcony

Scale in metres. This drawing is for illustration purposes only. All measurements are approximate and details intended to be relied upon should be independently verified.

Produced by **The Fotobase Group**