

# MAGAIN



## 87 Riesling Crescent ANDREWS FARM SA

3 2 4

Andrews Farm has so much to offer with new Shops, Medical Centres, Parks, Walking Trails, Sporting Clubs currently being developed at a rapid rate. As an owner occupier or tenant, you will be proud to call this home!

Currently tenanted until April 2021 as part of the NRAS Scheme (National Affordability Scheme) with an income of \$244 per week. PLUS an annual tax incentive of \$11,248.09 (approx), this represents an outstanding opportunity to add to your investment property portfolio, with an attractive 7.1% gross return!

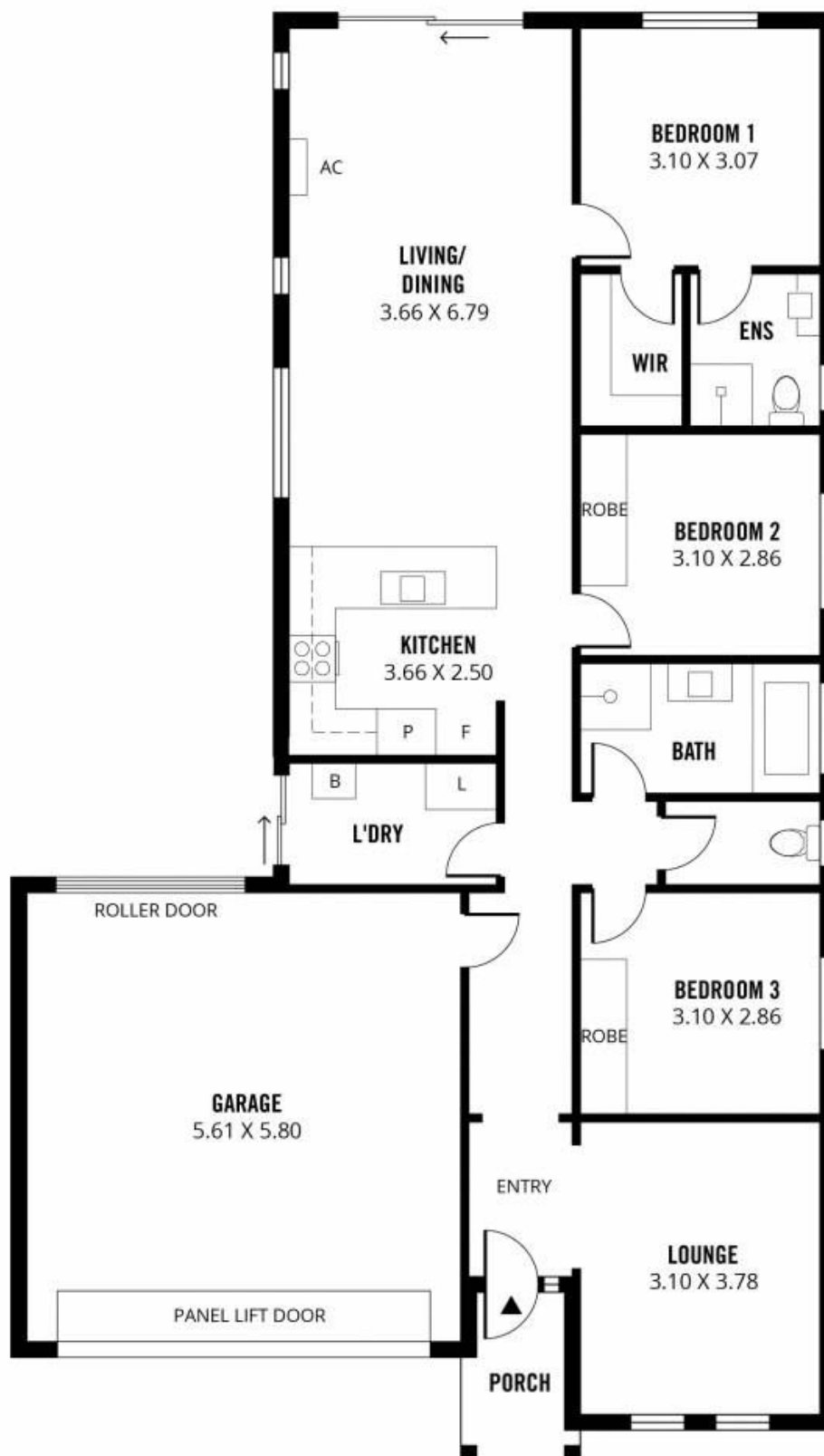
Features you will love:

**Type** : House  
**Building Size** : 152 sqm  
**Land Size** : 375 sqm  
**View** : <https://www.magain.com.au/property/87-riesling-crescent-andrews-farm-sa/8423115>

[For full version visit the website](https://www.magain.com.au)

<https://www.magain.com.au>  
Magain Real Estate

765 Marion Road Ascot Park SA  
08 8277 1777



**152m<sup>2</sup>**

**TOTAL**

113m<sup>2</sup>

Living

3m<sup>2</sup>

Porch

36m<sup>2</sup>

Garage

Scale in metres. This drawing is for illustration purposes only. All measurements are approximate and details intended to be relied upon should be independently verified. Produced by **The Fotobase Group**