




# MAGAIN



**12/261 Pirie Street ADELAIDE SA**

**2**  **1**  **1** 

Perfectly positioned in the desirable East-End, this stylish apartment offers a cosmopolitan lifestyle with conveniences such as vibrant Rundle Street, Rundle Mall, East park lands, Botanic Gardens, an array of trendy cafes & restaurants plus so much more right on your doorstep!

Situated in the popular 2008 built "Tivoli Apartments", this immaculately maintained property is ready to move in and enjoy or a great opportunity for investors to take advantage of the excellent potential return.

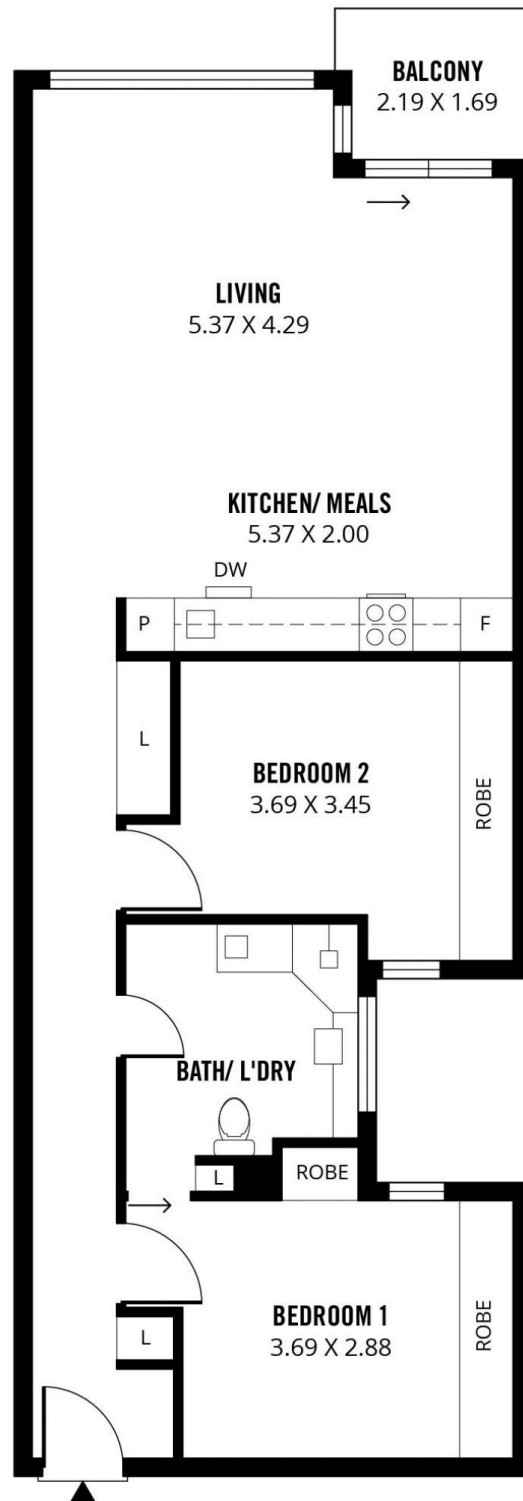
Features include:

- 2 Spacious bedrooms, both with BIR's
- Open plan living, dining & kitchen area

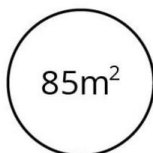
[For full version visit the website](https://www.magain.com.au/property/12261-pirie-street-adelaide-sa/8423128)

**Type** : Apartment

**View** : <https://www.magain.com.au/property/12261-pirie-street-adelaide-sa/8423128>



**TOTAL**



Living



Balcony

Scale in metres. This drawing is for illustration purposes only. All measurements are approximate and details intended to be relied upon should be independently verified. Produced by **The Fotobase Group**