

MAGAIN



1102/39 Grenfell Street ADELAIDE SA

2  2  1 

Perfectly positioned on the top floor of the popular Princes Apartments, this immaculately maintained split-level apartment features two levels of living space including open plan living, dining and kitchen area, separate upstairs second living area/retreat, two generous bedrooms & two sparkling bathrooms!

Recently updated throughout, this generous apartment boasts style & sophistication!

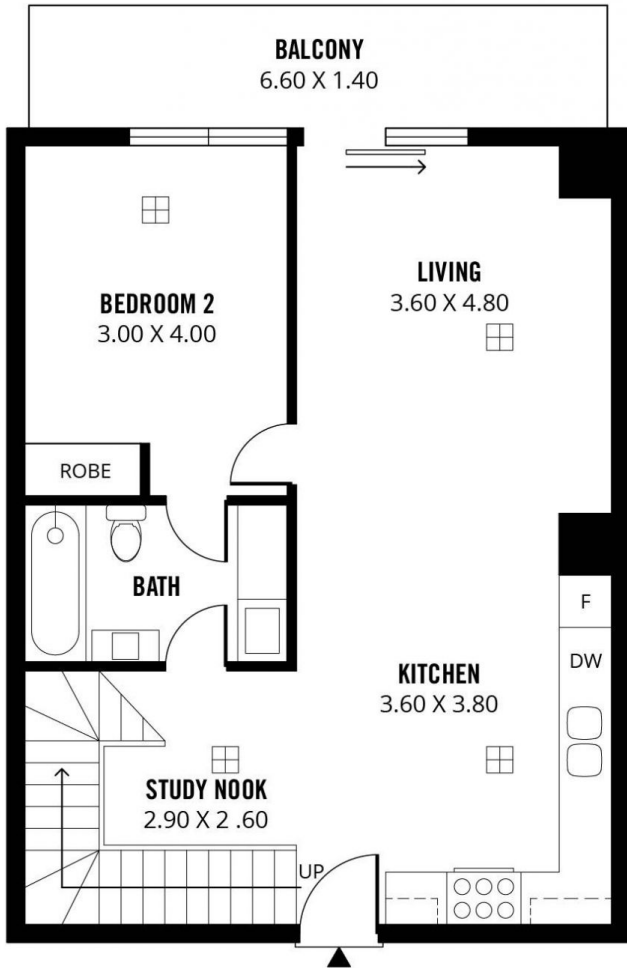
Located in the heart of the CBD, surrounded by trendy cafes & restaurants, public transport links, Rundle Mall shopping and Adelaide Central Markets plus conveniences such as Adelaide Oval, UniSA, Adelaide Uni, Adelaide High School and Adelaide Botanic High School all within a

Type : Apartment
Building Size : 145 sqm
View : <https://www.magain.com.au/property/110239-grenfell-street-adelaide-sa/8423132>

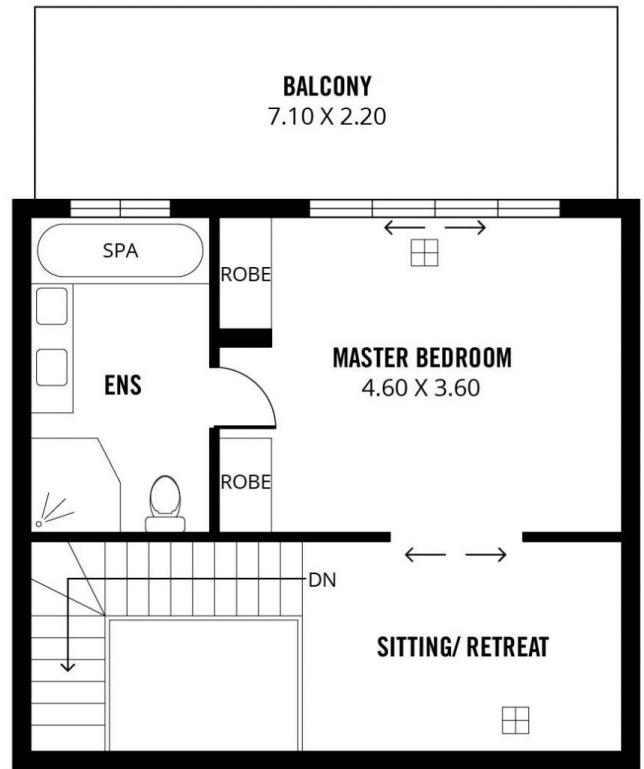
[For full version visit the website](https://www.magain.com.au)

<https://www.magain.com.au>
Magain Real Estate

765 Marion Road Ascot Park SA
08 8277 1777



LOWER LEVEL



UPPER LEVEL

145m²

TOTAL



Scale in metres. This drawing is for illustration purposes only. All measurements are approximate and details intended to be relied upon should be independently verified.

Produced by **The Fotobase Group**