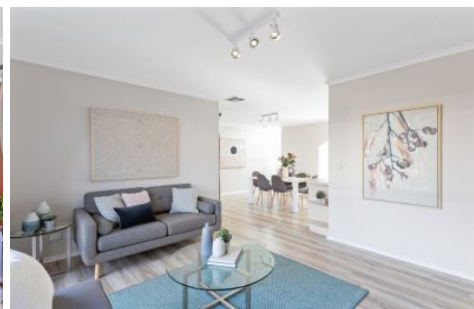





MAGAIN



13/120 North East Road WALKERVILLE SA

2  1  2 

Welcome to the prestigious St Andrews Close in the exclusive suburb of Walkerville located just 10-15 minutes from popular North Adelaide, Prospect and the CBD Precincts.

Discreetly positioned behind high rendered walls and set amongst lovely manicured gardens this appealing and updated townhouse is one of only 13 tightly held homes which are popular with both owner occupiers and investors.

Affording a high level of security, style and space you have all the ingredients for an exciting low maintenance lifestyle!

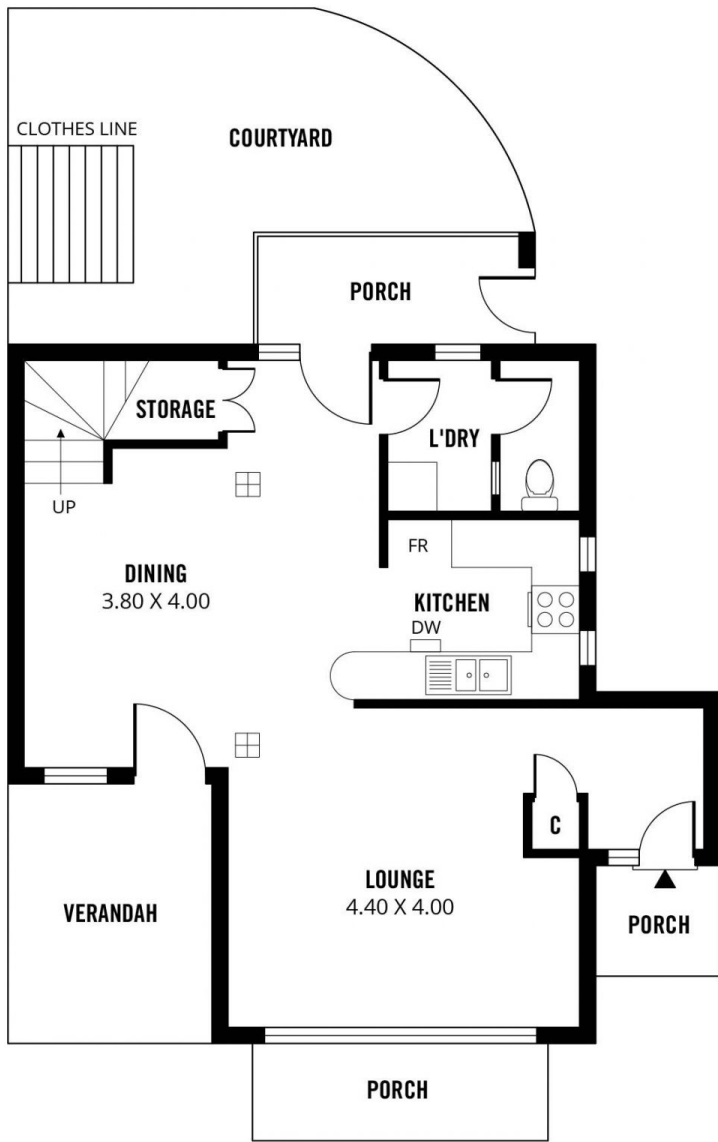
The Why To Buy :-)

[For full version visit the website](https://www.magain.com.au/property/13-120-north-east-road-walkerville-sa/8423-139)

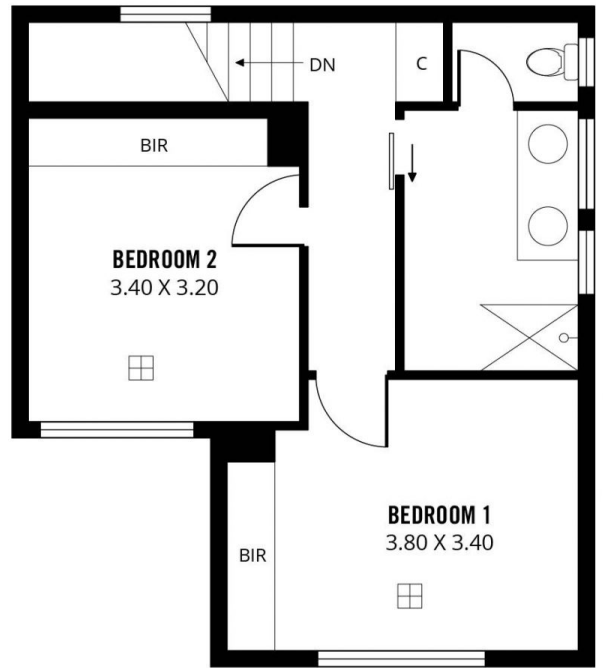
Type : Townhouse
Building Size : 121 sqm
View : <https://www.magain.com.au/property/13-120-north-east-road-walkerville-sa/8423-139>

<https://www.magain.com.au>
Magain Real Estate

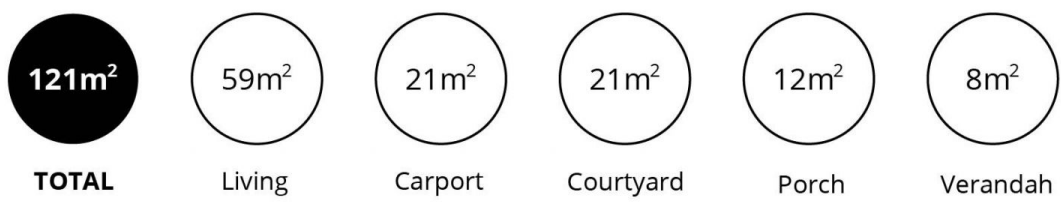
765 Marion Road Ascot Park SA
08 8277 1777



GROUND FLOOR



FIRST FLOOR



Scale in metres. This drawing is for illustration purposes only. All measurements are approximate and details intended to be relied upon should be independently verified.