

# MAGAIN



**42/7 Liberman Close ADELAIDE SA**

2 2 2

\*\* Please contact agent on 0488 222 392 to arrange a private inspection. \*\*

Perfectly positioned in the timeless "Garden East" development, this spacious apartment is city living at it's finest, located in one of Adelaide's most sought after precincts.

Take advantage of the vibrant East-End location with direct access to the East Parklands, trendy cafes, restaurants, wine bars & fantastic shopping, all while maintaining a sense of peacefulness & tranquility in the iconic "Magarey" building.

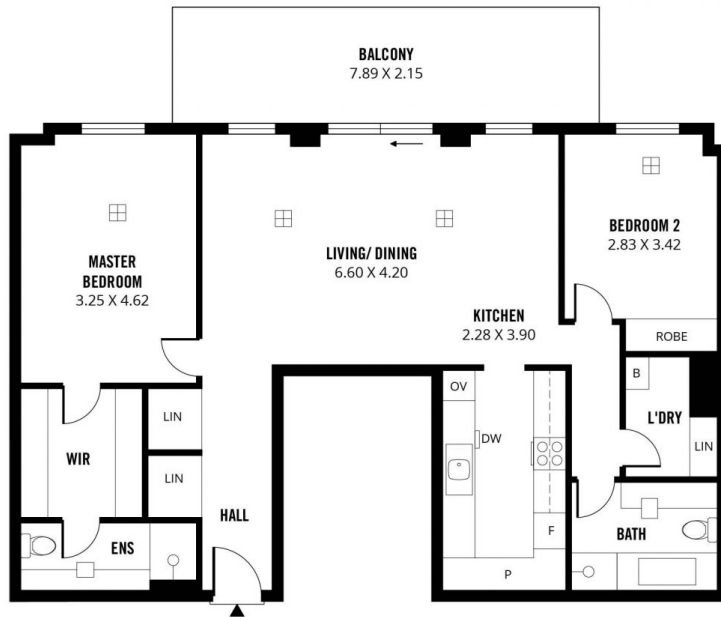
This well-thought-out design offers a centrally located

[For full version visit the website](https://www.magain.com.au/property/42-7-liberman-close-adelaide-sa/8423154)

**Type** : Apartment  
**Building Size** : 124 sqm  
**View** : <https://www.magain.com.au/property/42-7-liberman-close-adelaide-sa/8423154>

<https://www.magain.com.au>  
Magain Real Estate

765 Marion Road Ascot Park SA  
08 8277 1777



Scale in metres. This drawing is for illustration purposes only. All measurements are approximate and details intended to be relied upon should be independently verified. Produced by **The Fotobase Group**